



# SPATIAL DATA AND PLANNING SUPPORT FOR OECM IDENTIFICATION: UNDP-LED OFFERINGS

---

## HAC Virtual Fair 2026

Annie Virnig, UNDP  
Liliana Corzo, UNDP



**OFFERING 1**  
Identify potential OECMs:  
Essential Life Support Area (ELSA) Tool on UNBL

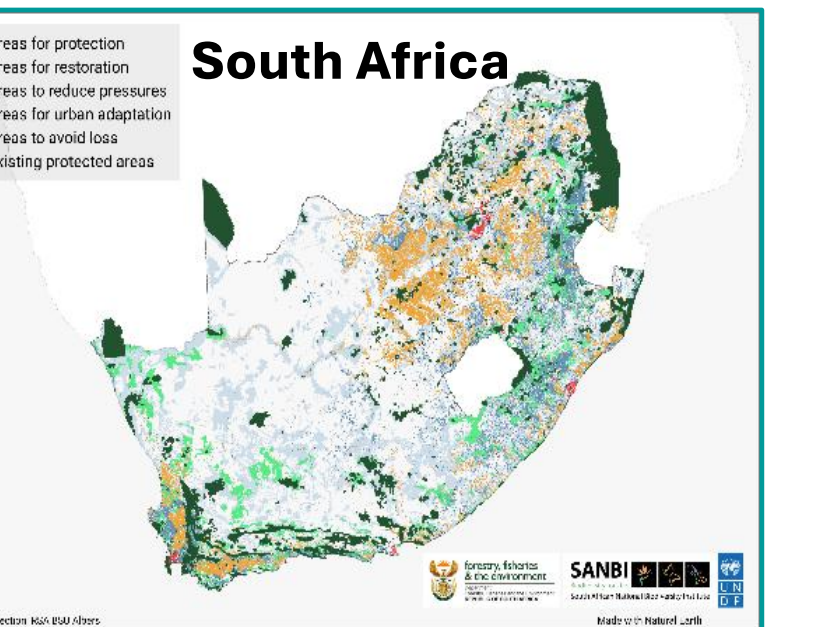
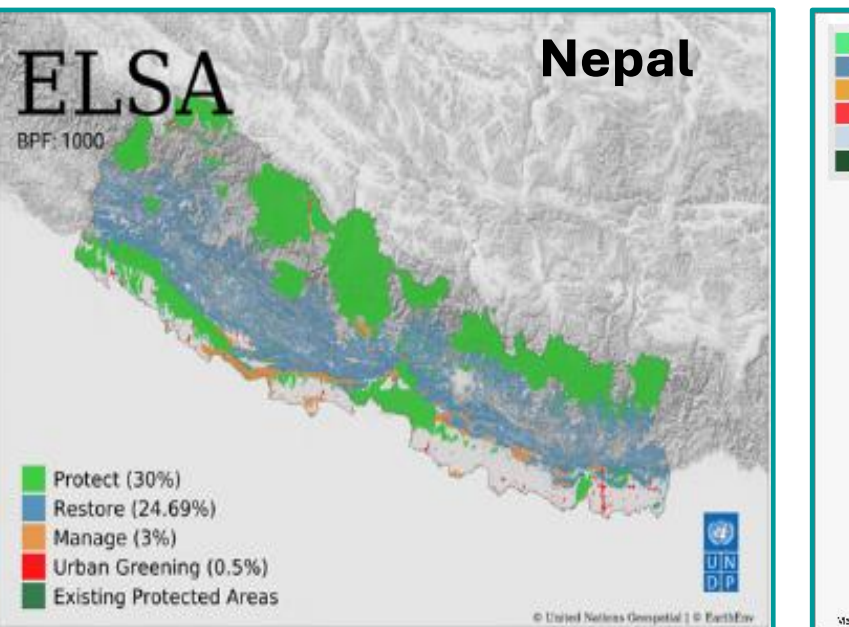
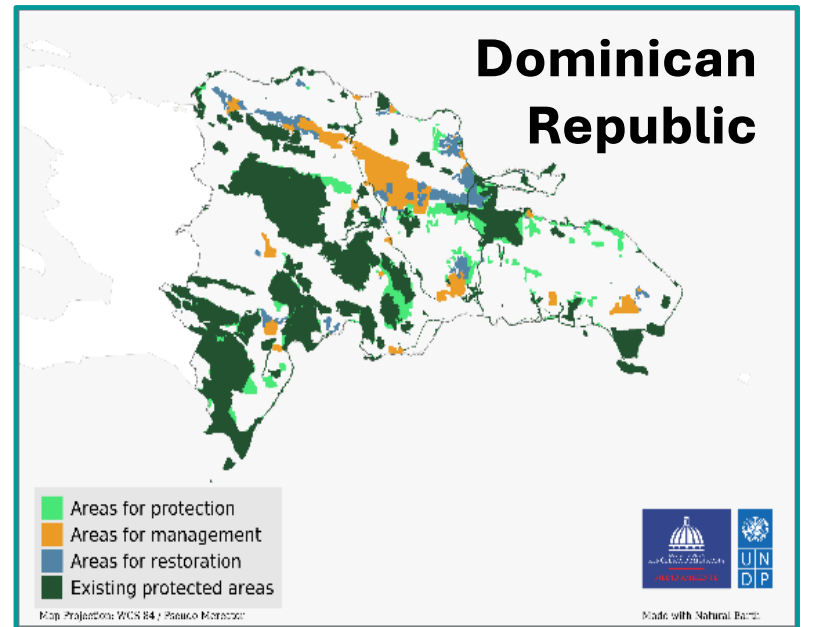
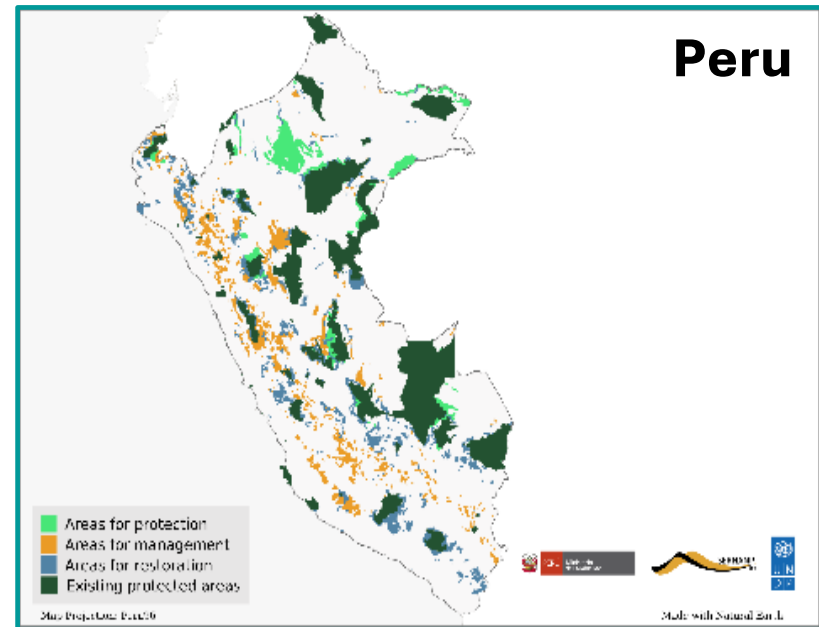
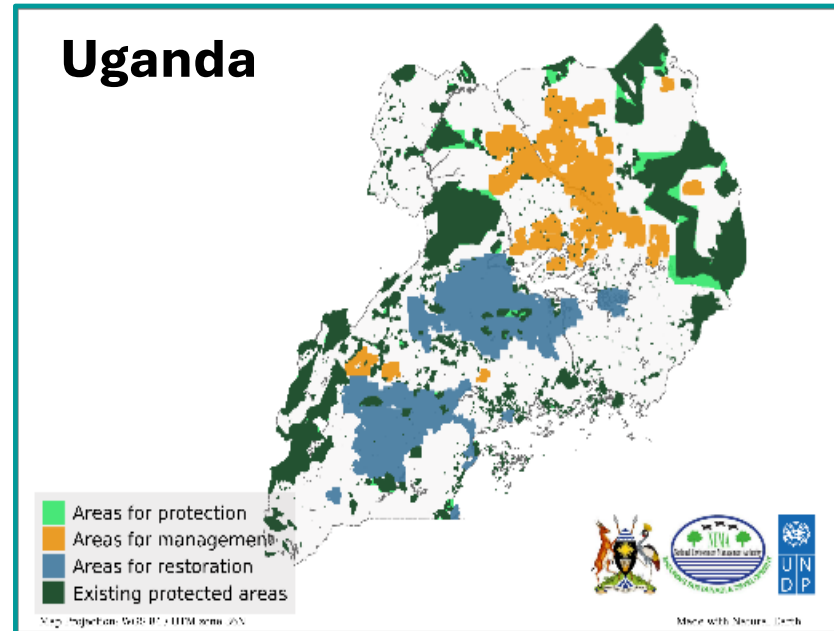
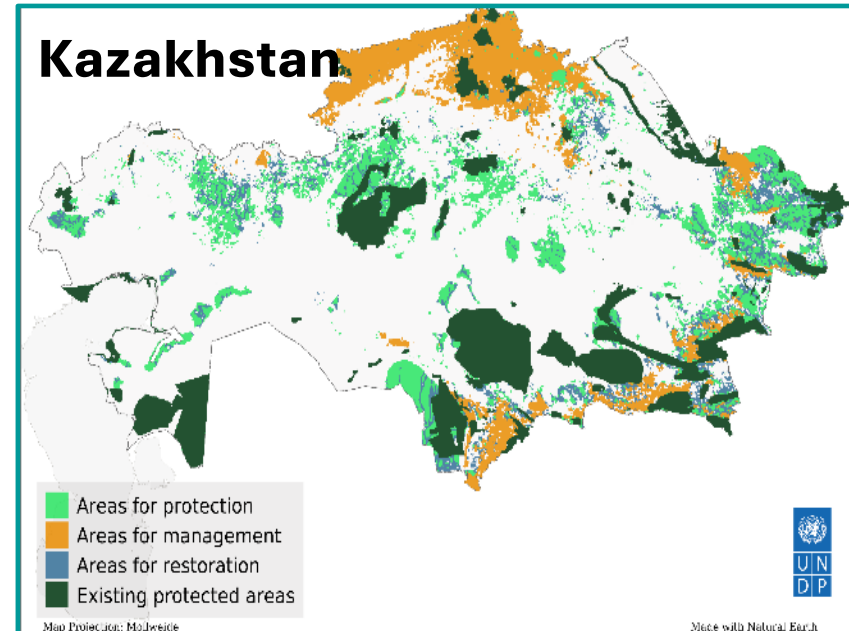
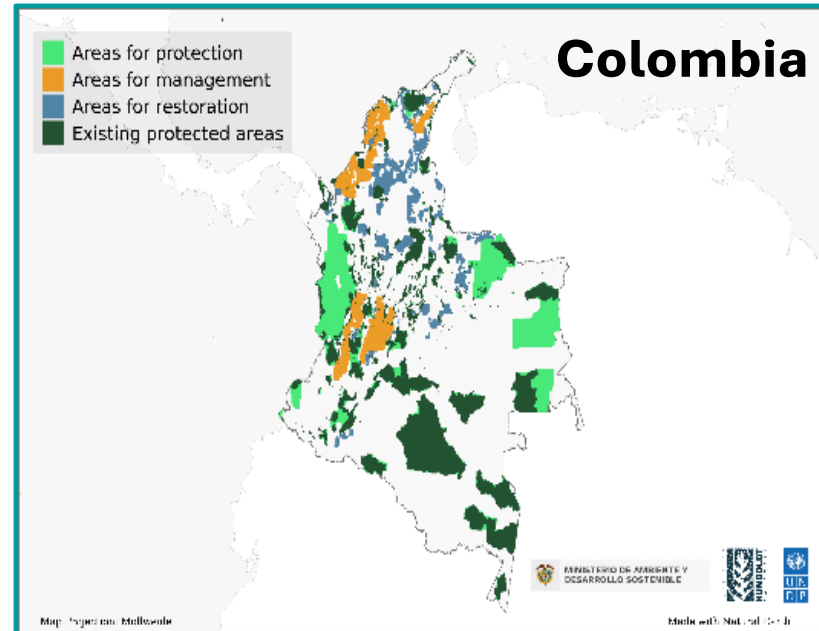
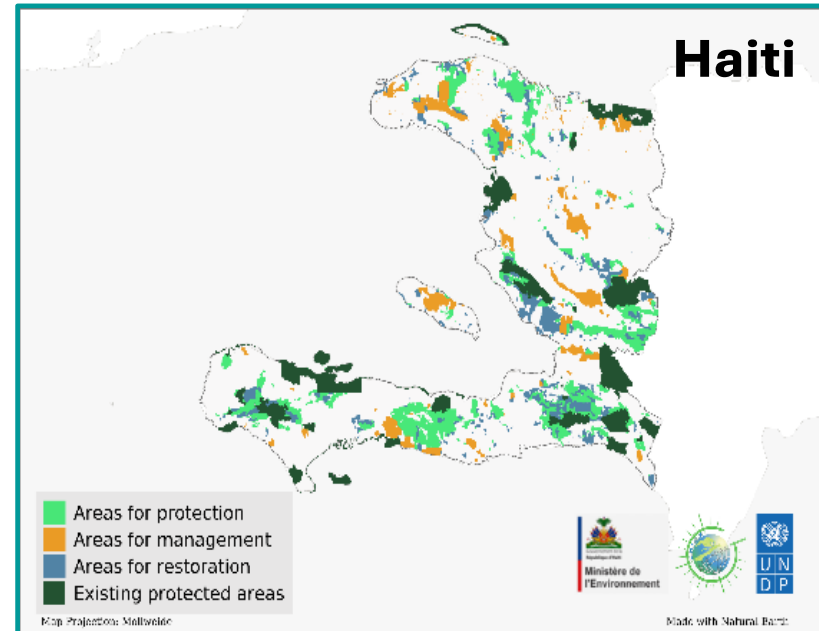
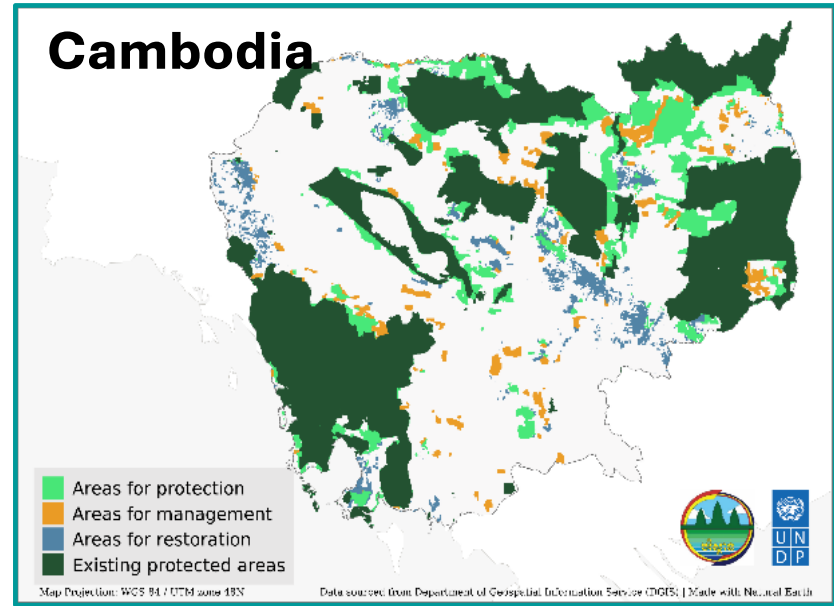
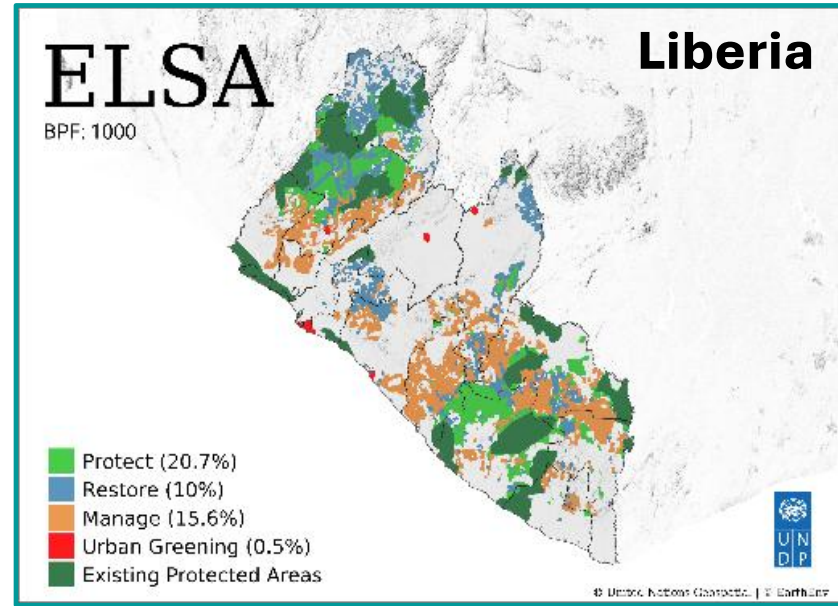
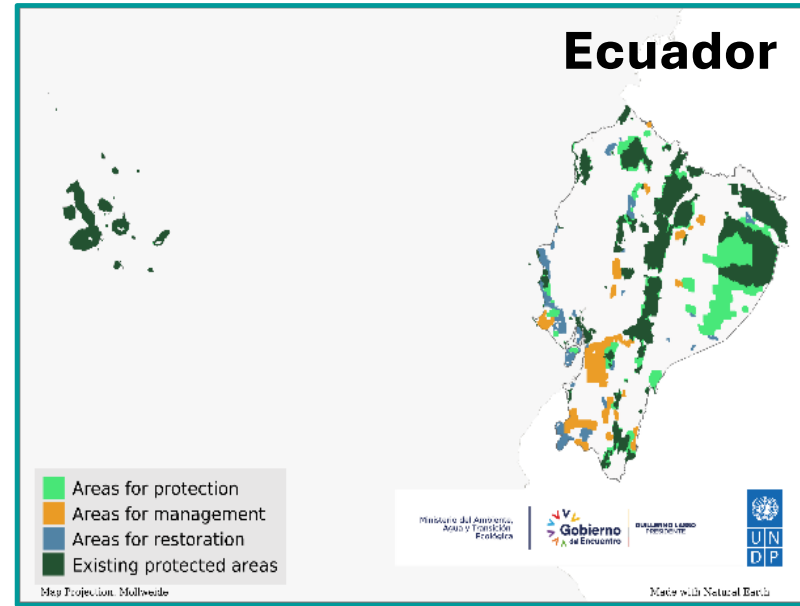
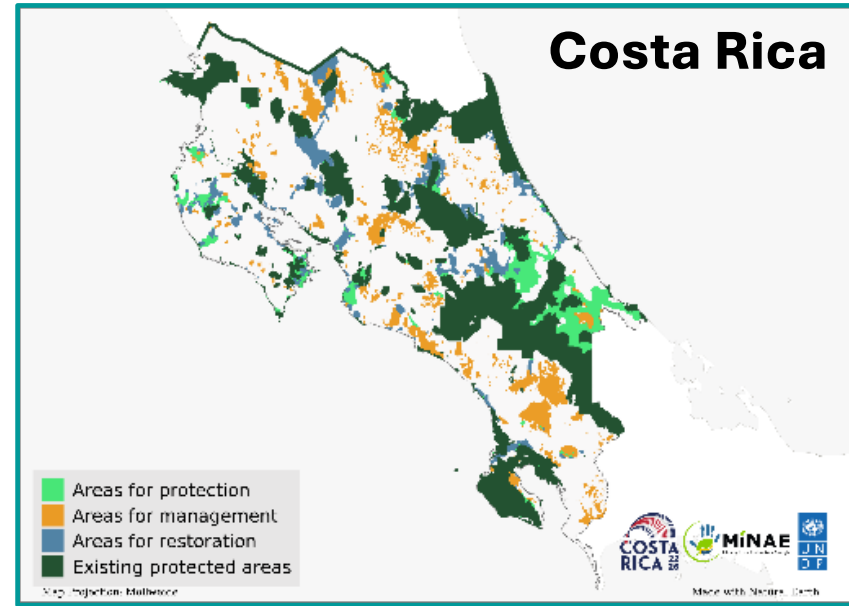
# UN Biodiversity Lab

Providing decision makers with the best available spatial data to put nature at the center of sustainable development.

[Launch map](#)



Chile





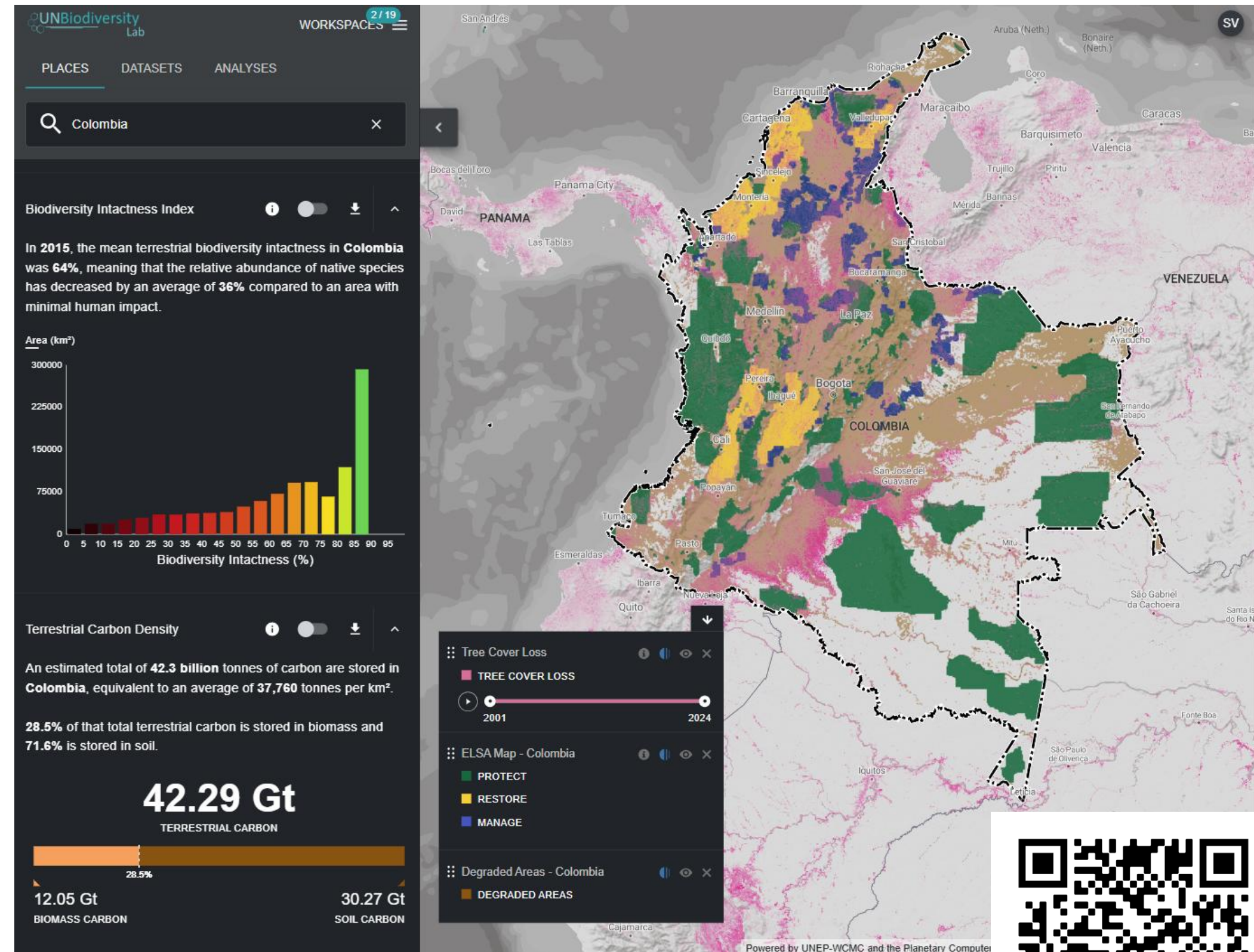
# INTRODUCING THE ELSA\* INTEGRATED SPATIAL PLANNING TOOL ON UNBL

**\*Essential Life Support Areas**

# ELSA Integrated Spatial Planning Tool on UNBL

## What is it?

- Creates priority maps showing where actions to **protect**, manage, restore, and urban green can best support GBF Targets 1-12
- Developed through consultations with **two Expert Advisory Committees**



# 1. Set budgets for area-based targets



The screenshot displays the UNBiodiversity Lab interface. On the left, a sidebar shows a list of workspaces: 'Moore - Haiti', 'ELSA Costa Rica', 'Moore - Peru', and 'ELSA South Africa'. The 'Moore - Peru' workspace is selected. Below the workspace list, there are sections for 'Monday, 28th April 2025' and 'Friday, 25th April 2025', each containing test runs with their status and duration. The main area shows a map of Peru with a semi-transparent dialog box titled 'Run new analysis • Moore - Peru'. The dialog has two tabs: 'SET BUDGETS & PARAMETERS' (active) and 'SET FEATURE WEIGHTS'. The 'SET BUDGETS & PARAMETERS' tab contains the following fields and options:

- Analysis run name: Analysis run name \*
- Analysis run status: DRAFT
- Protect budget: 30 %
  - Do not lock in existing protected areas
  - Lock-in existing protected areas (75%)
- Manage budget: 5 %
  - Consider all relevant areas (91.25%)
  - Agricultural areas only (14.09%)
- Restore budget: 5 %
  - Consider all relevant areas (57.87%)
  - Consider forest ecosystem only (61.59%)
- Urban greening budget: 0.5 %
- Total: 40.5 %
- Boundary penalty factor: Boundary penalty factor

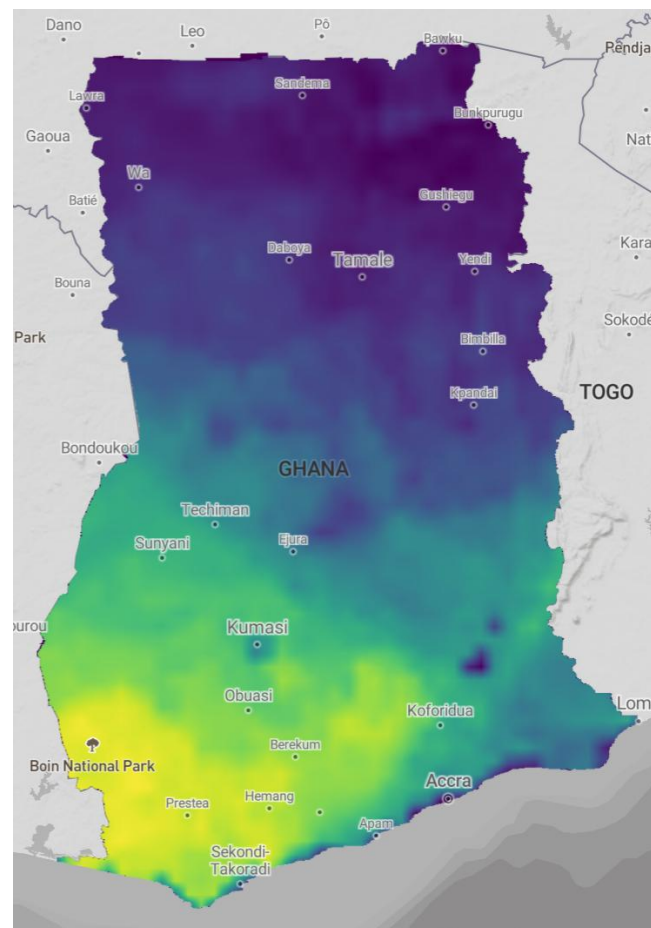
At the bottom of the dialog are three buttons: 'CANCEL', 'SAVE FOR LATER', and 'RUN ANALYSIS'. The background map shows a satellite view of the region with various cities labeled, including Caravari, Tefe, Coari, Manicoré, Labrea, Porto Velho, Rio Branco, Riberalta, JHParaná, Cacoal, Santa Ana del Yacuma, and Trinidad. A scale bar at the bottom right indicates 100 km.

# 2. Weight input data based on national priorities



Higher priority...

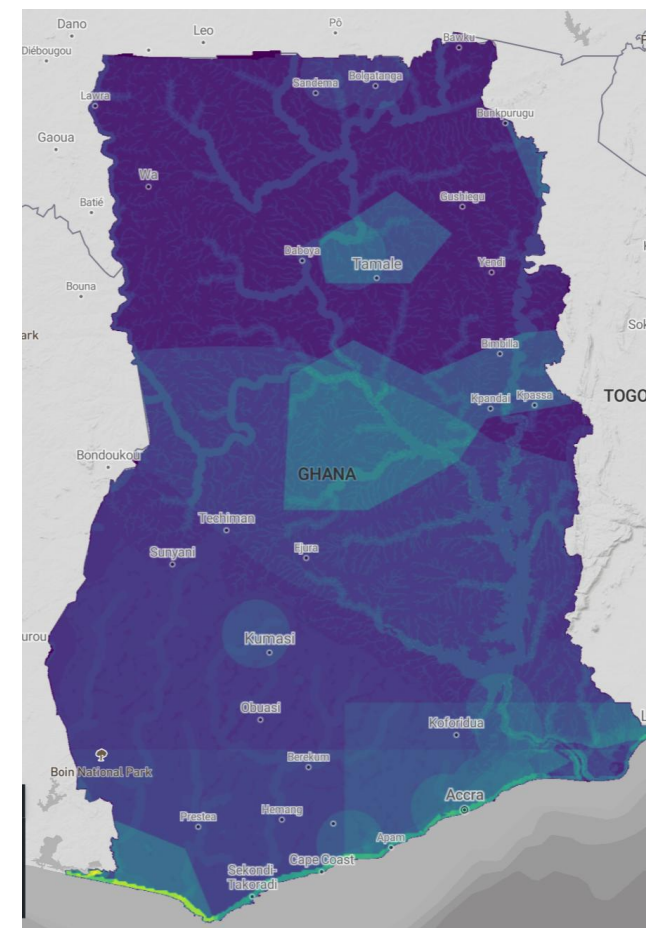
Threatened Species Richness i Biodiversity • Restore • Protect • Manage 4 9.11



... higher weight

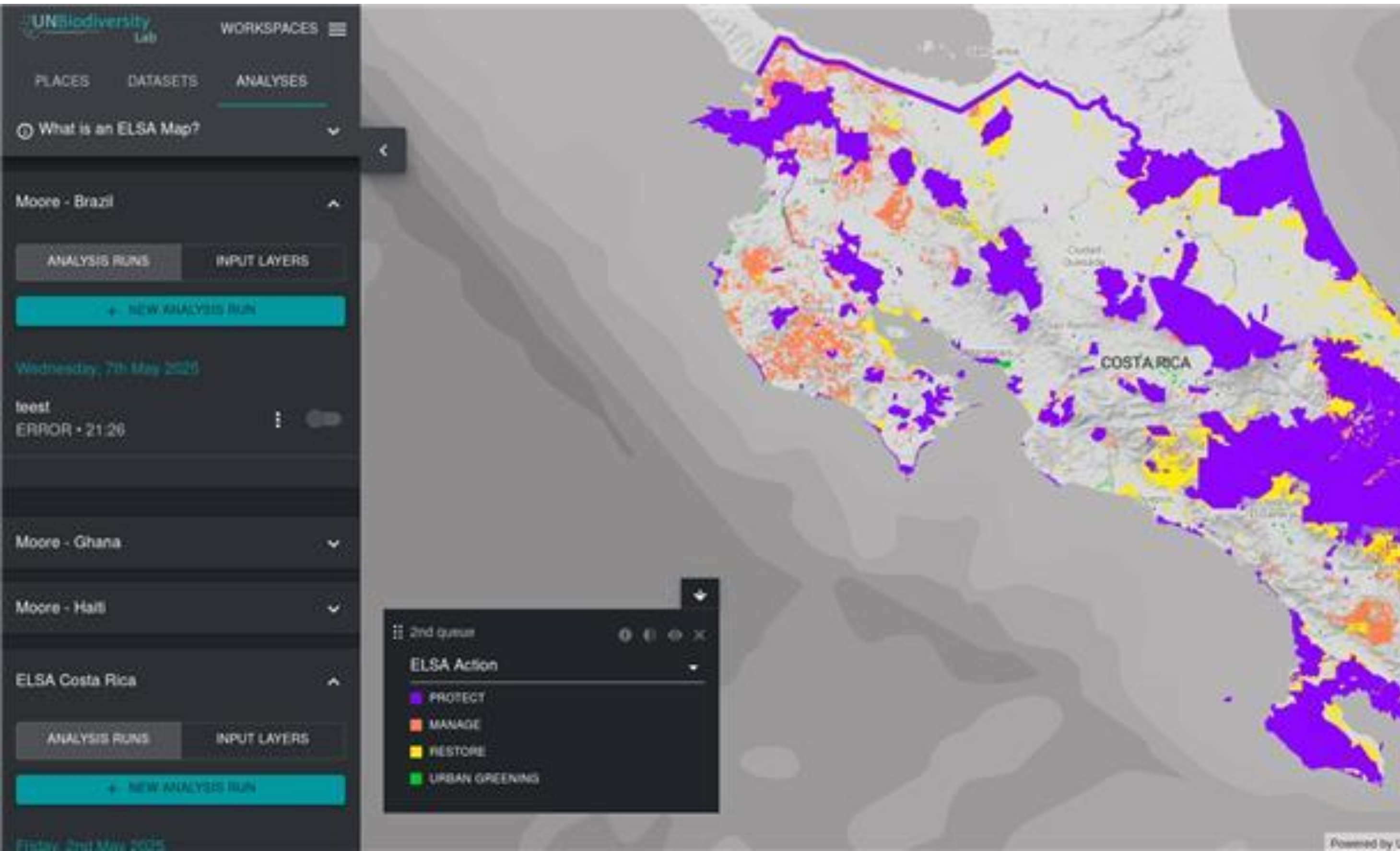
Lower priority...

Underrepresented Ecosystems i Biodiversity • Protect 3 3.7



... lower weight

# 3. Run optimization



- Identifying areas that maximize the overall representation whilst staying within our area-based targets
- Leading to a final map that can support spatial planning for the KMGBF

# ELSA Integrated Spatial Planning Tool

Freely  
available  
to any user  
within the  
UNBL  
workspace.



The image shows a screenshot of the ELSA web application interface. The top left corner features the UNBiodiversity Lab logo and a 'WORKSPACES' menu with '3 / 16' items. Below this are navigation tabs for 'PLACES', 'DATASETS', and 'ANALYSES'. A dropdown menu is open under 'ANALYSES', showing 'What is an ELSA Map?'. The main content area is titled 'Moore - Malawi' and has two tabs: 'ANALYSIS RUNS' and 'INPUT LAYERS'. A prominent teal button says '+ NEW ANALYSIS RUN'. Below this, two analysis runs are listed: 'Equal Weights - BPF 0 - No lockin' (COMPLETE • 10:06) and 'Equal Weights - BPF 0' (COMPLETE • 12:40). The right side of the interface is dominated by a map of Malawi, overlaid with various planning layers. A legend in the bottom right corner identifies these layers: 'Existing Protected Areas' (green), 'LOCK-IN ZONE' (dark green), 'ELSA Action' (a dropdown menu), 'PROTECT' (light green), 'MANAGE' (light blue), 'RESTORE' (yellow), and 'URBAN GREENING' (orange). The map shows these layers across Malawi, with major cities like Lilongwe, Mzuzu, and Zomba labeled. The bottom right corner of the map area has the text 'Powered by UNEP-WCMC'.

# OUR VISION: DYNAMIC TIERS OF ENGAGEMENT TO MEET NATIONAL NEEDS

01

## ELSA for All on UNBL

Integrated spatial planning tool that can be used **FREELY** by any country (*Free service, no funding needed*)

02

## National Integrated Spatial Planning on UNBL

Customized approach based on national context & targets (*Possibility for HAC Matchmaking Facility*)

03

## Subnational ELSA on UNBL

Highly tailored approach using subnational data & targets (*Possibility for HAC Matchmaking Facility*)

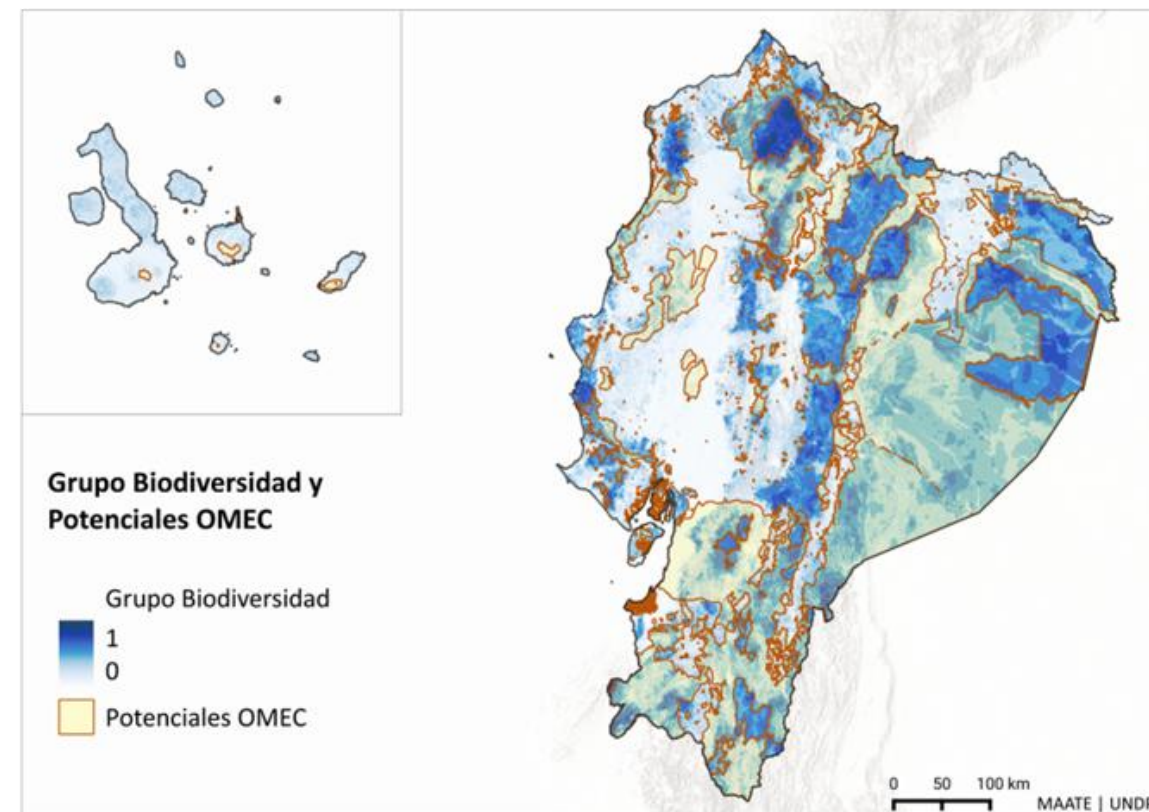


# OFFERING 2

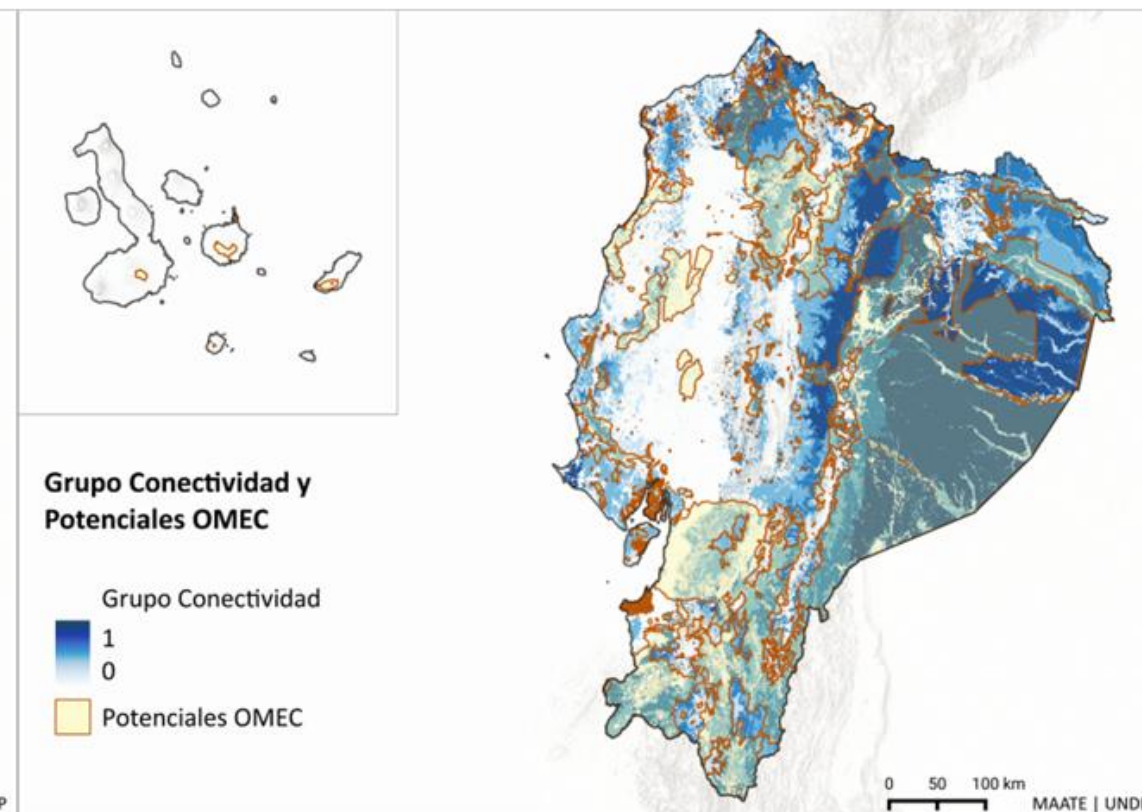
Spatial evaluation of Other effective area-based conservation measures (OECMs)

# Spatial Prioritization Map to Support Identification of New PAs / Potential OECMs – Example of Ecuador

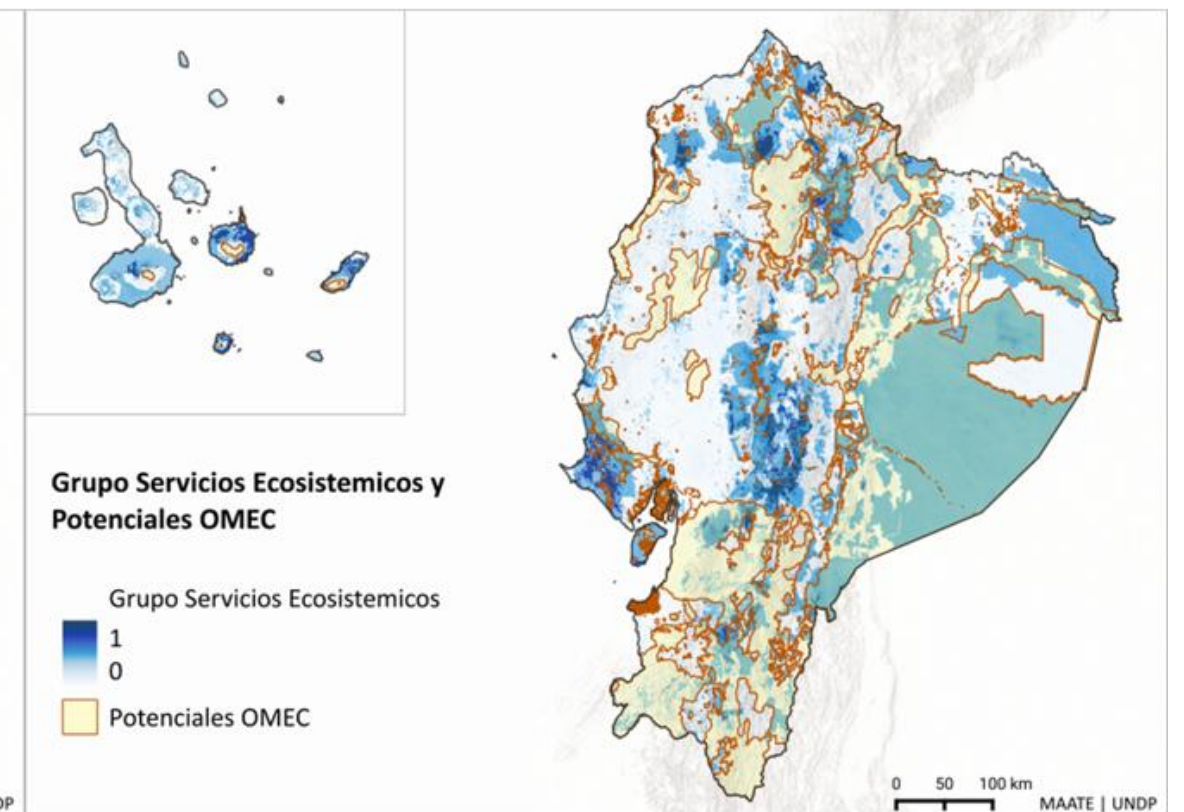
#1 Biodiversity



#2 Connectivity

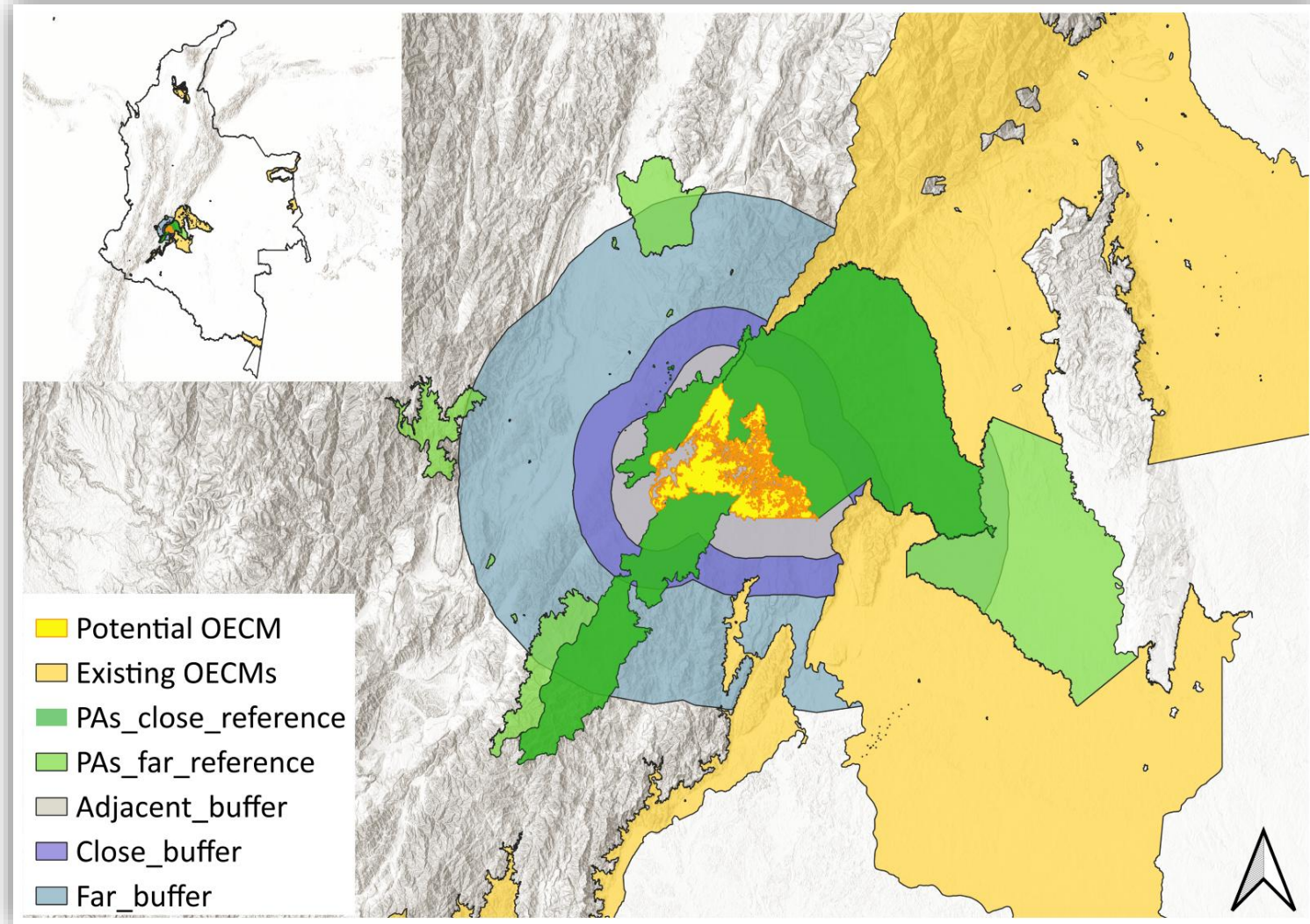


#3 Ecosystem Services



- **What:** (1) Spatial prioritization analysis based on GBF and NBTs to support identification of new PAs / potential OECMs. (2) Mapping environmental values of potential OECMs.
- **Why:** Support governments to prioritize areas for NBSAP implementation
- **How:** Co-created with national stakeholders using customized systematic conservation planning analysis and webtool

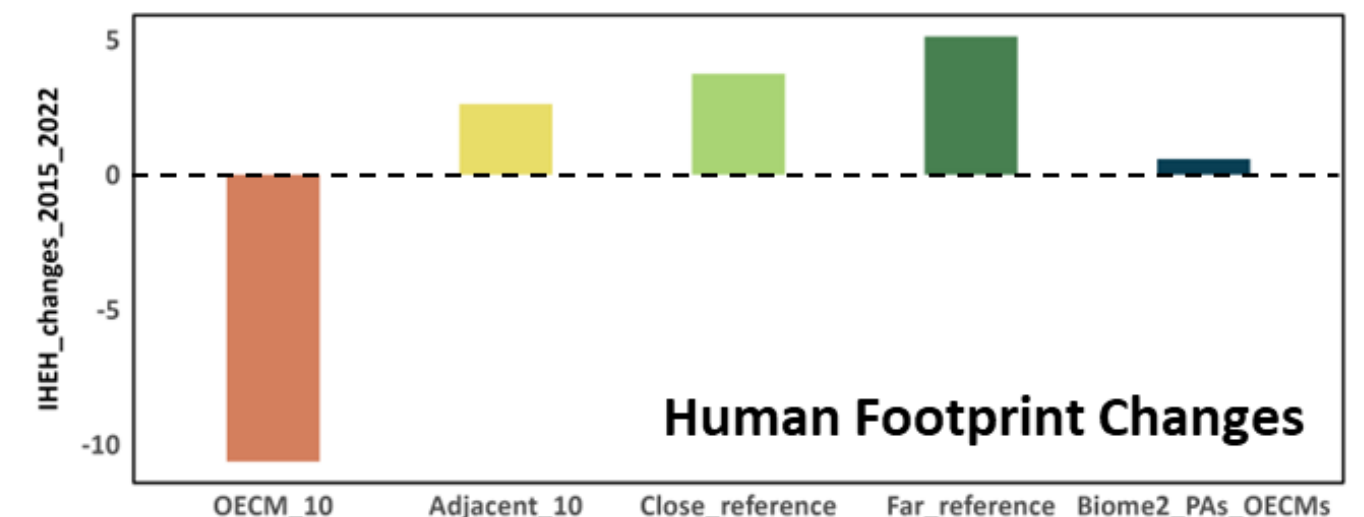
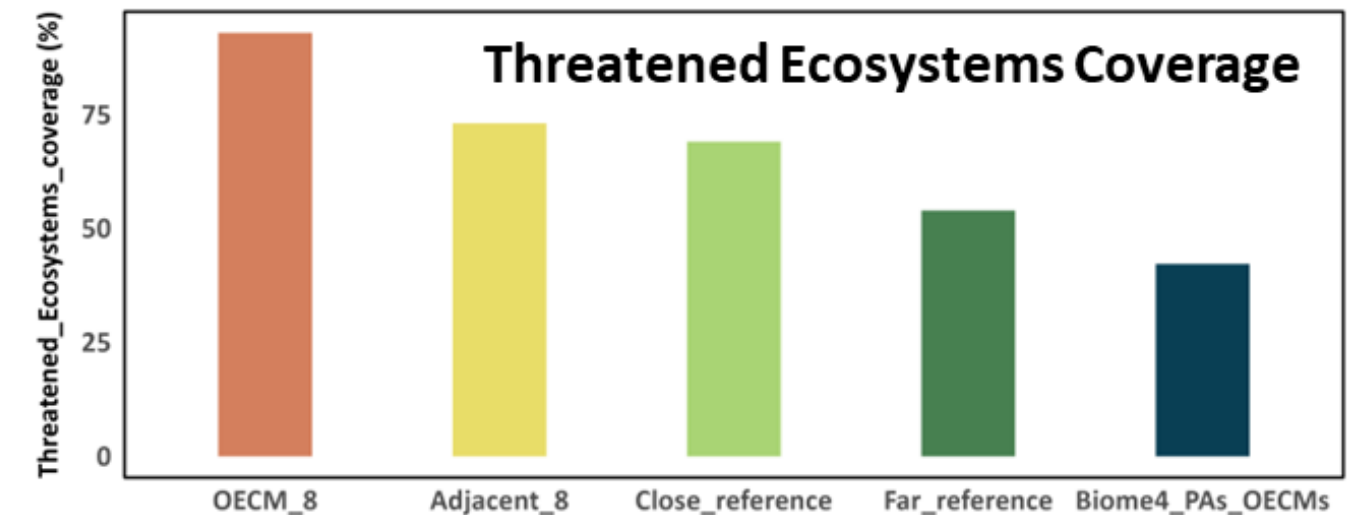
# Assessing OECMs according to IUCN guidance – Example of Colombia



- **What:** Perform site-level assessments of potential OECMs on providing “*biodiversity outcomes of comparable importance and complementary to those of protected areas*” (IUCN, 2024)
- **Why:** The evaluation will support countries in prioritizing **OECMs for site-level validation**.

## How:

- Evaluate with indicators on Biodiversity, Ecosystem Services, Ecological Integrity & Connectivity, Ecosystems, Status & Change in Human Footprint, Traditional Human Uses
- Customize based on national policy & context.





## At-cost service: Spatial evaluation for potential OECMs

### ACTIVITIES

- **Inception workshop** to mobilize key stakeholders and definition of a **work plan and relevant timeline**
- Host a suite of meetings to obtain **specific input** on policy, science and data
- Co-creating a **spatial prioritization map** that enables countries to map out areas where to protect, manage and restore nature to achieve simultaneously their NBTs and contribute to the KMGBF targets
- **Designing and executing a spatial analysis to evaluate potential OECMs** based on the IUCN guidance to support government efforts towards site-level validation
- Develop **supporting documents** to hand over the final maps, access to UNBL webtool, and ensure continuity
- Hosting **relevant capacity building and training** (English, French, Portuguese, Russian, Spanish)
- Connect, if relevant, the technical team with the team working on the **NBSAP and 7th National Report** for effectively meeting the CBD decisions milestones

### FINAL PRODUCTS

- A **co-created spatial prioritization map**, indicating the areas where nature can be protected, restored or sustainably managed to achieve national biodiversity targets and the KMGBF targets. This can help countries to identify new priority areas for protection either as a PA or OECM.
- **Development and application of a spatial assessment for potential OECMs** to determine which OECMs are most important for key biodiversity, connectivity, vs. ecosystem services (OECM Criterion C and D)
- Overall **capacity building and training**



**THANK YOU!**

Anne Virnig – [anne.virnig@undp.org](mailto:anne.virnig@undp.org)

Liliana Corzo – [liliana.corzo@undp.org](mailto:liliana.corzo@undp.org)

