



Global Fishing Watch

*Open-access vessel tracking data as a tool for
PAME Assessments*

HAC 2026 Virtual Fair

Room 2: Improve, assess and monitor PAME at site level

Charles Kilgour

Where GFW data maps to PAME

Threat status — our data covers more than fishing

Overcoming data deficiencies — understanding where small-scale, artisanal and data-deficient fleets operate — supports more equitable, inclusive assessment

Implementation — verifiable evidence that regulations are being applied, beyond patrol records

Outcomes & effectiveness — is pressure actually reducing post-designation, or is this a paper park?



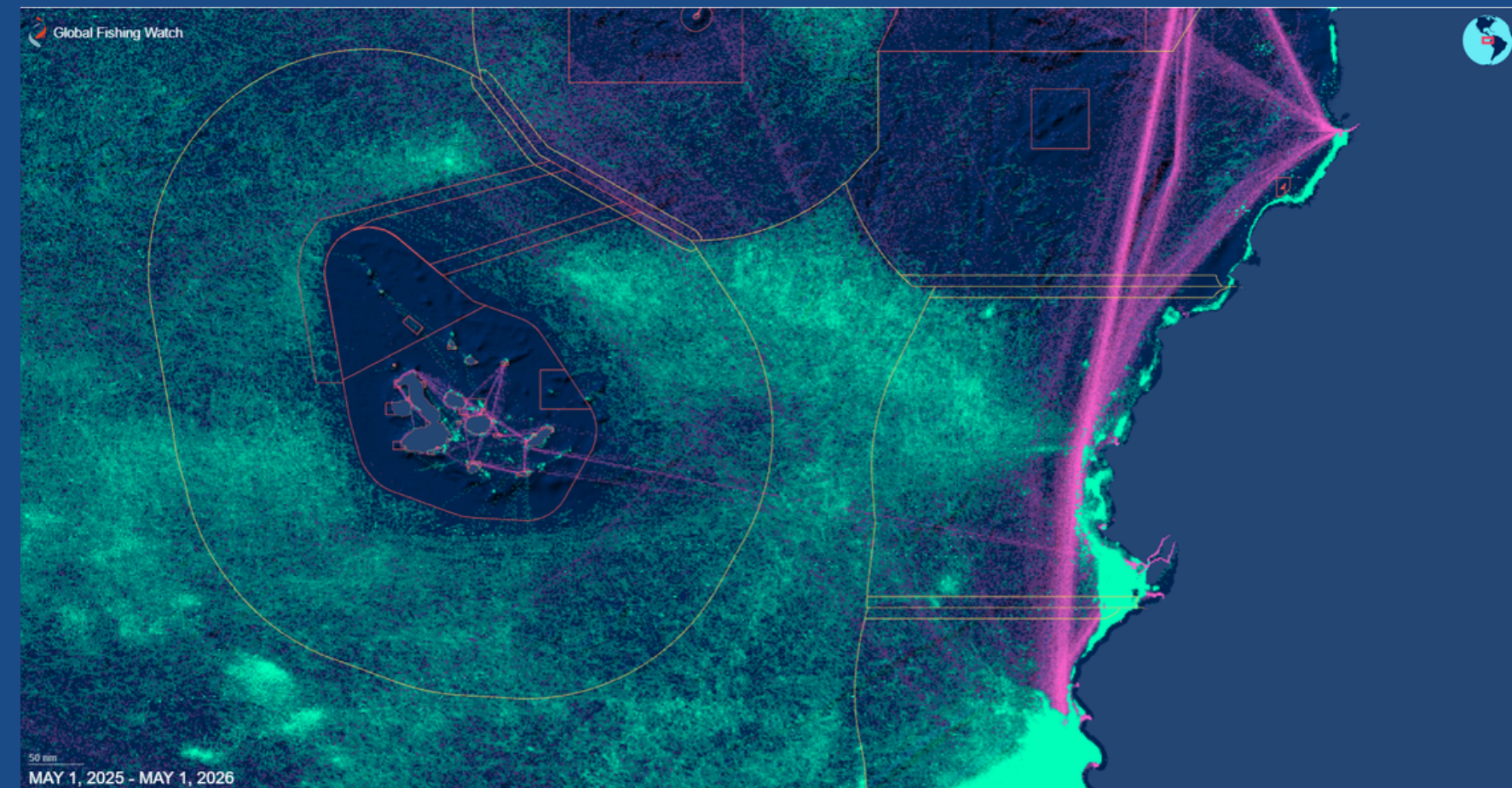
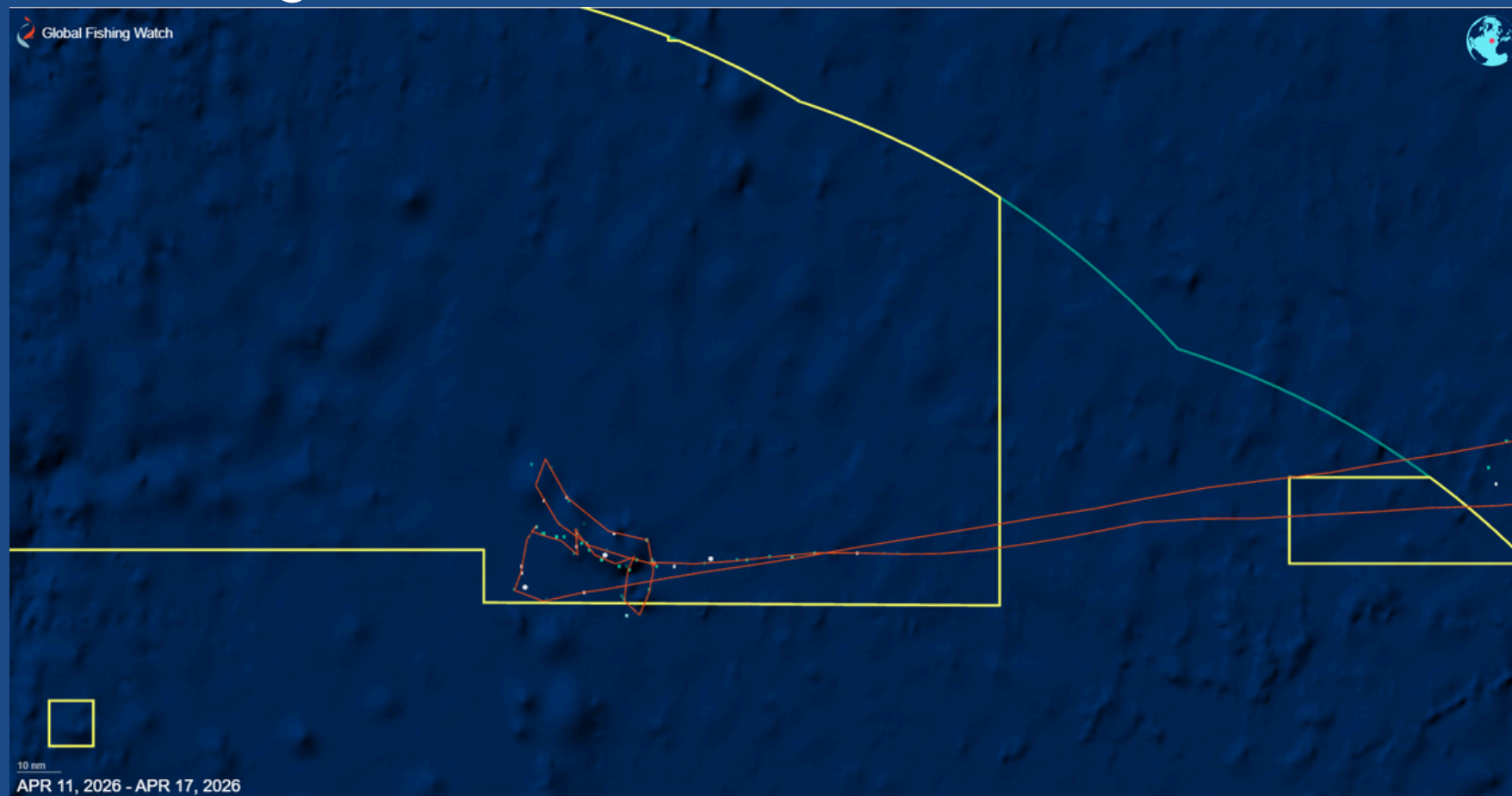
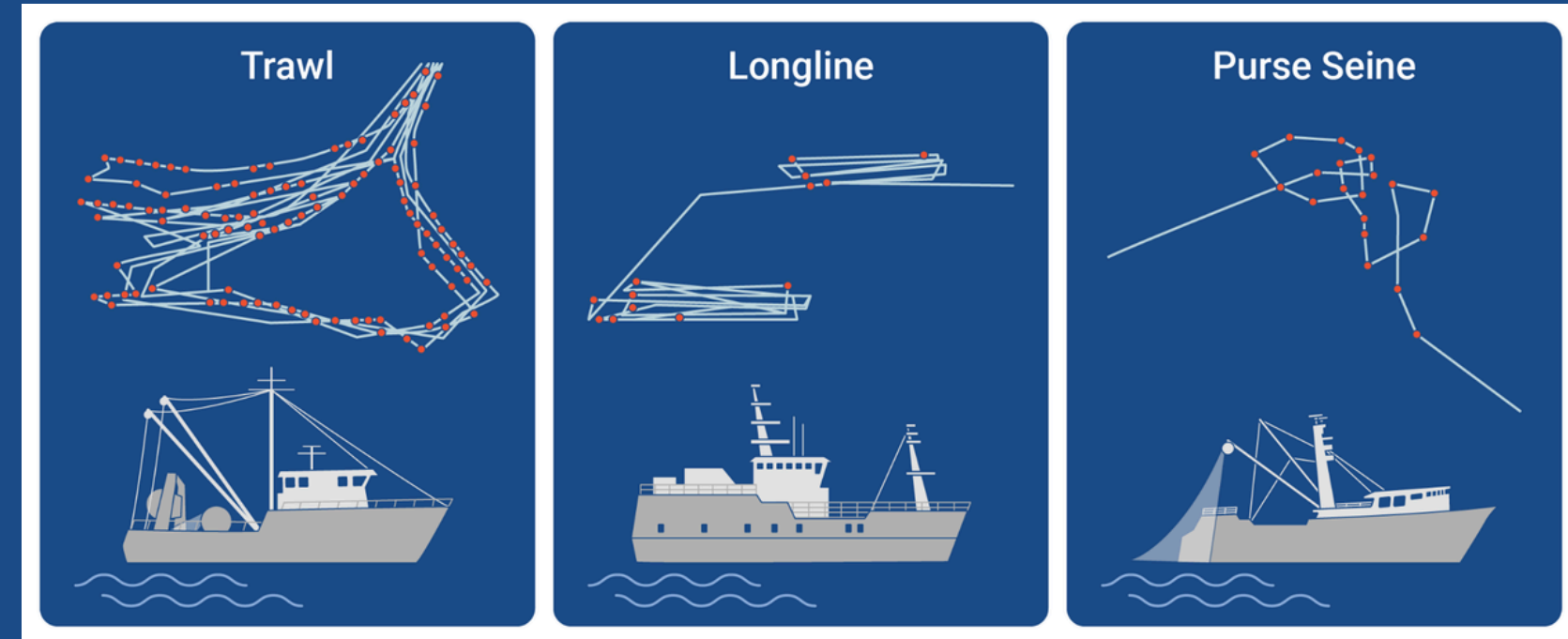
Assessors can use our data for specific indicators in assessment tools like METT-4

Open Vessel Tracking Data

Vessel tracking data is becoming more open and accessible.

- Vessel Monitoring System (VMS)
- Automatic Identification System (AIS)

Data processing and AI is helping to convert large amounts of data into new insights

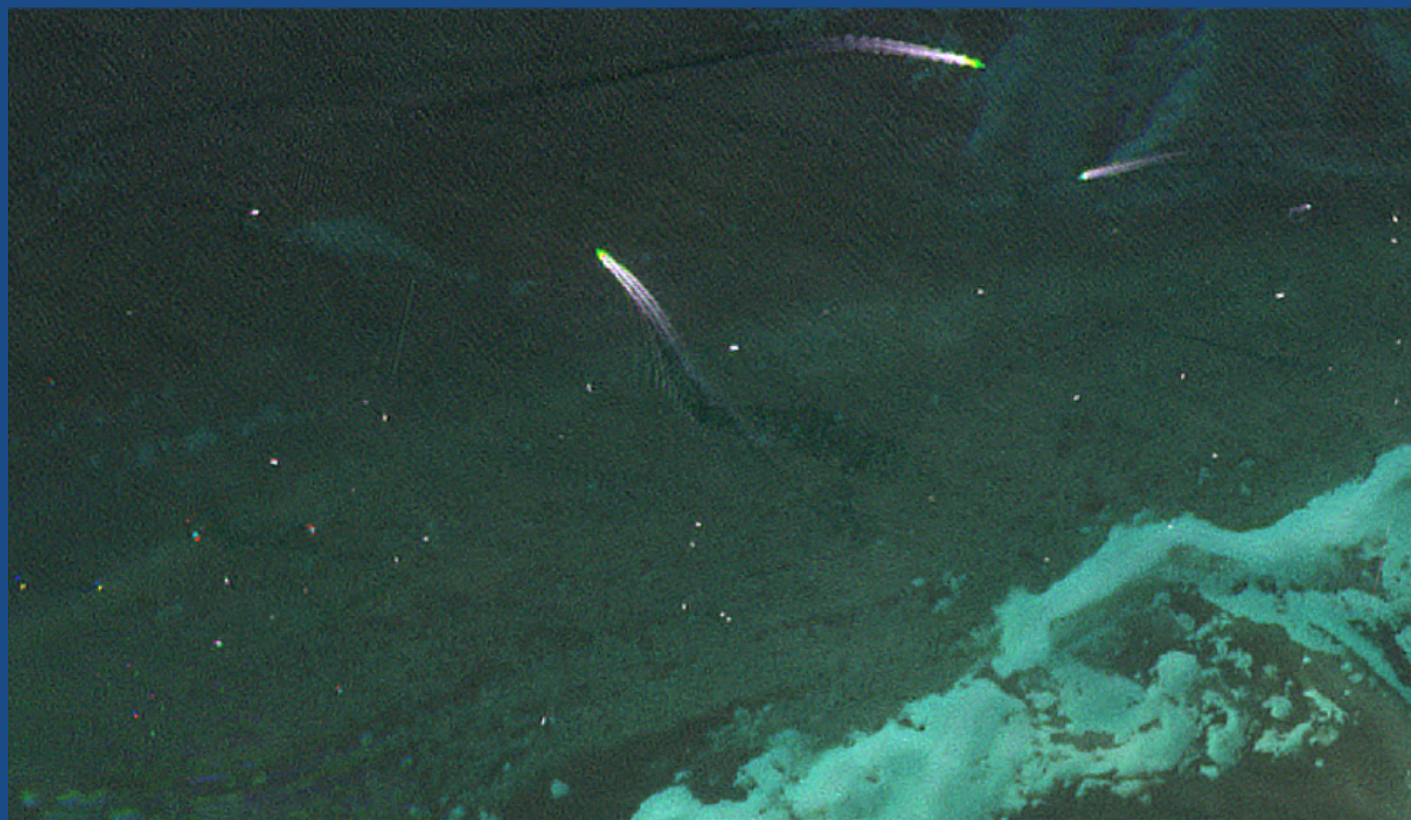
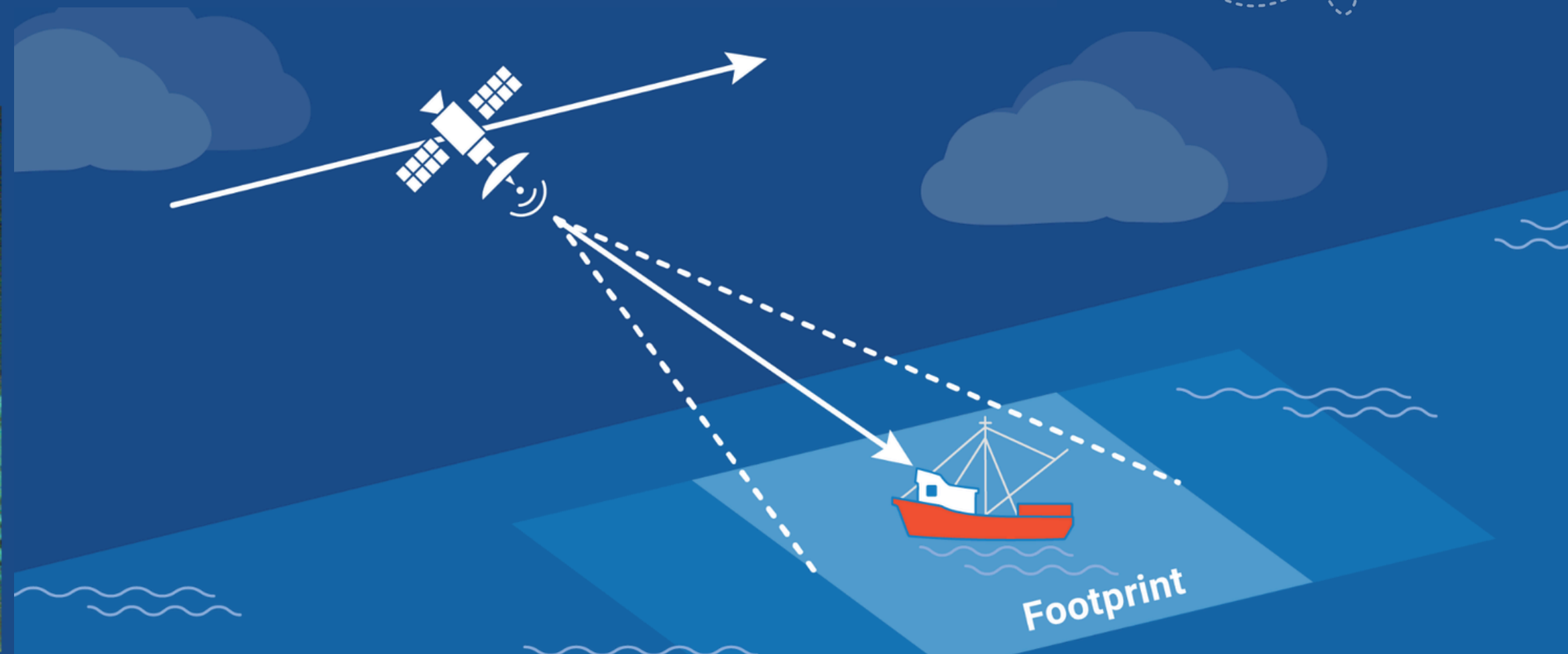


Earth observation satellite imagery from space

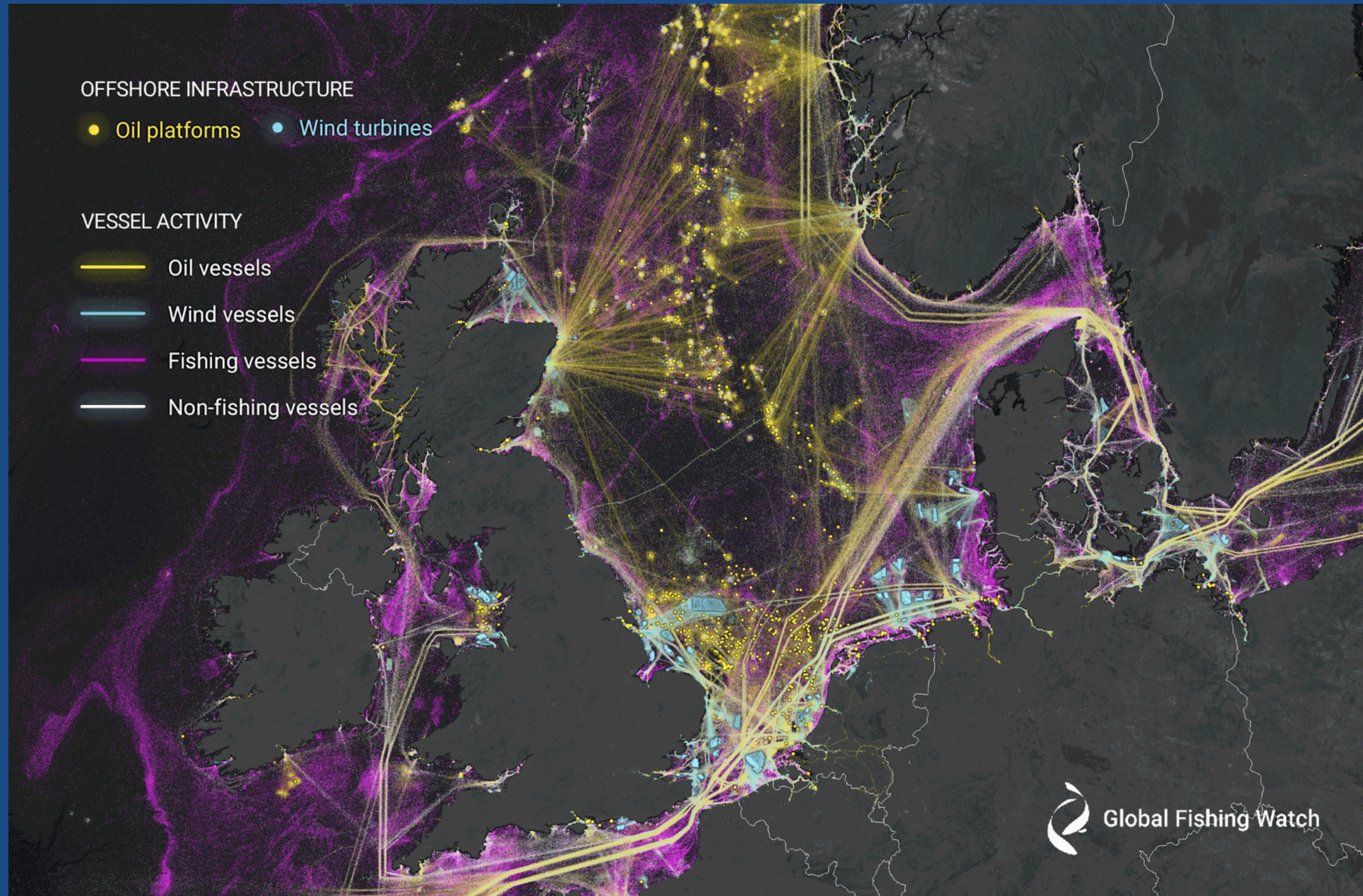
Earth observation (EO) satellite data are collected as satellites pass over the surface of the earth. Coverage is not typically global.

EO data collected can include:

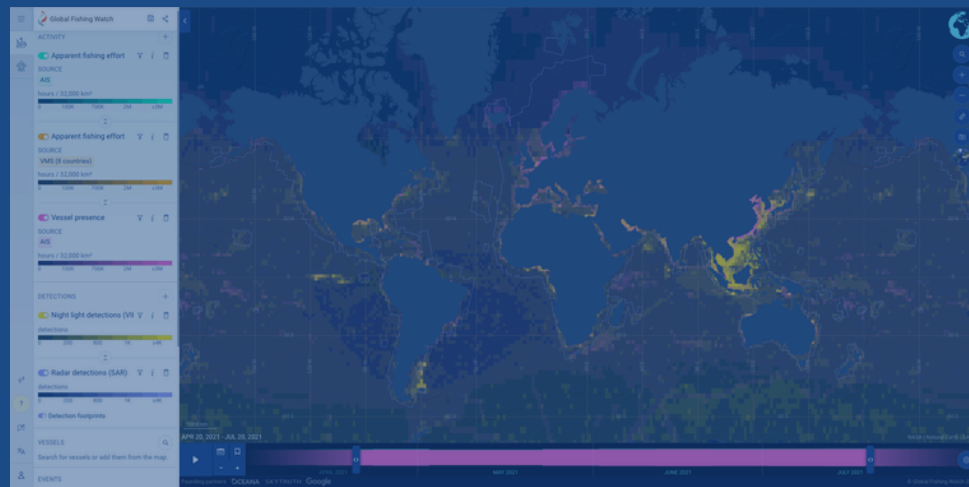
- Optical Images
- Radar Imagery
- Night Lights (VIIRS)



Overlaying earth observation and tracking data

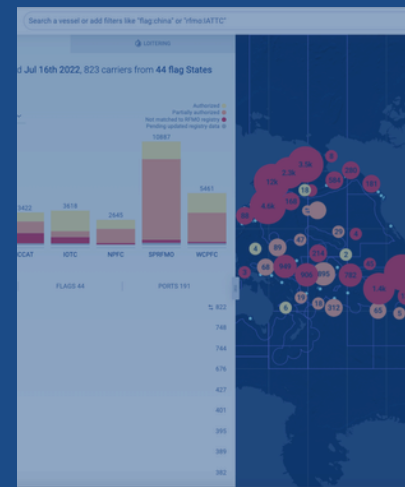


Our Products



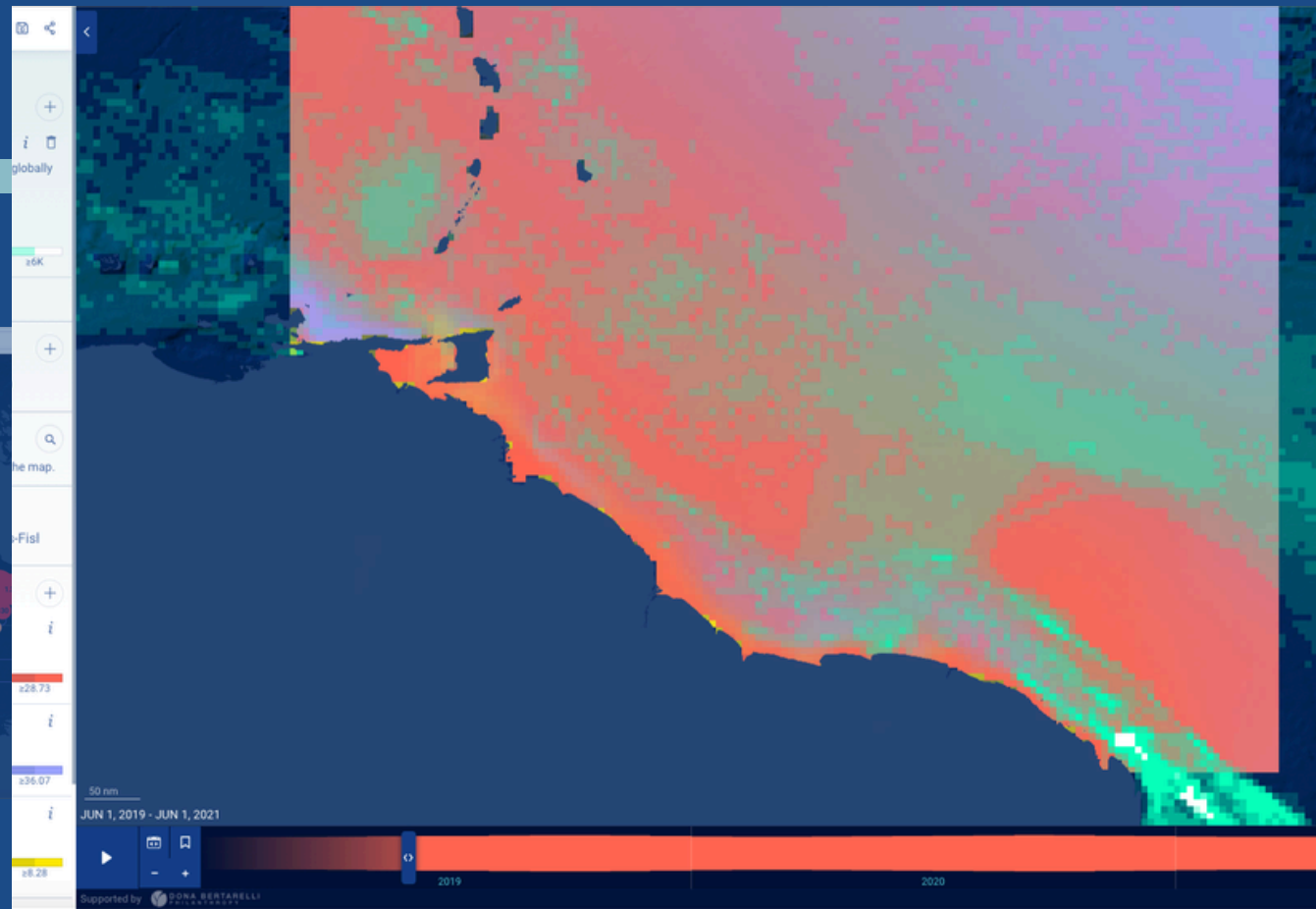
Global Fishing Watch Map

Open-access online tool for visualization and analysis of vessel-based human activity at sea.



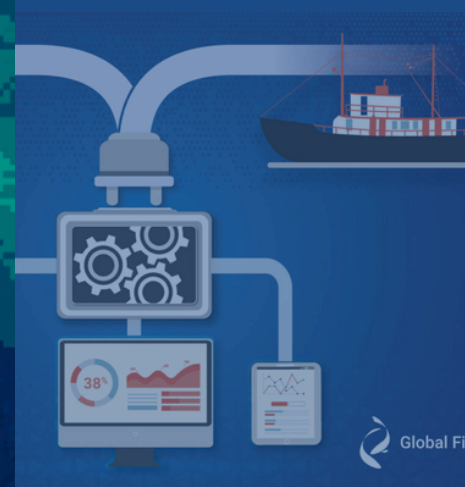
Carrier Vessels

Providing greater transparency of transshipment at sea.



Marine Manager

Dynamic, and interactive data on ocean conditions, biology, and human-use activity to support MPA management.



API Portal

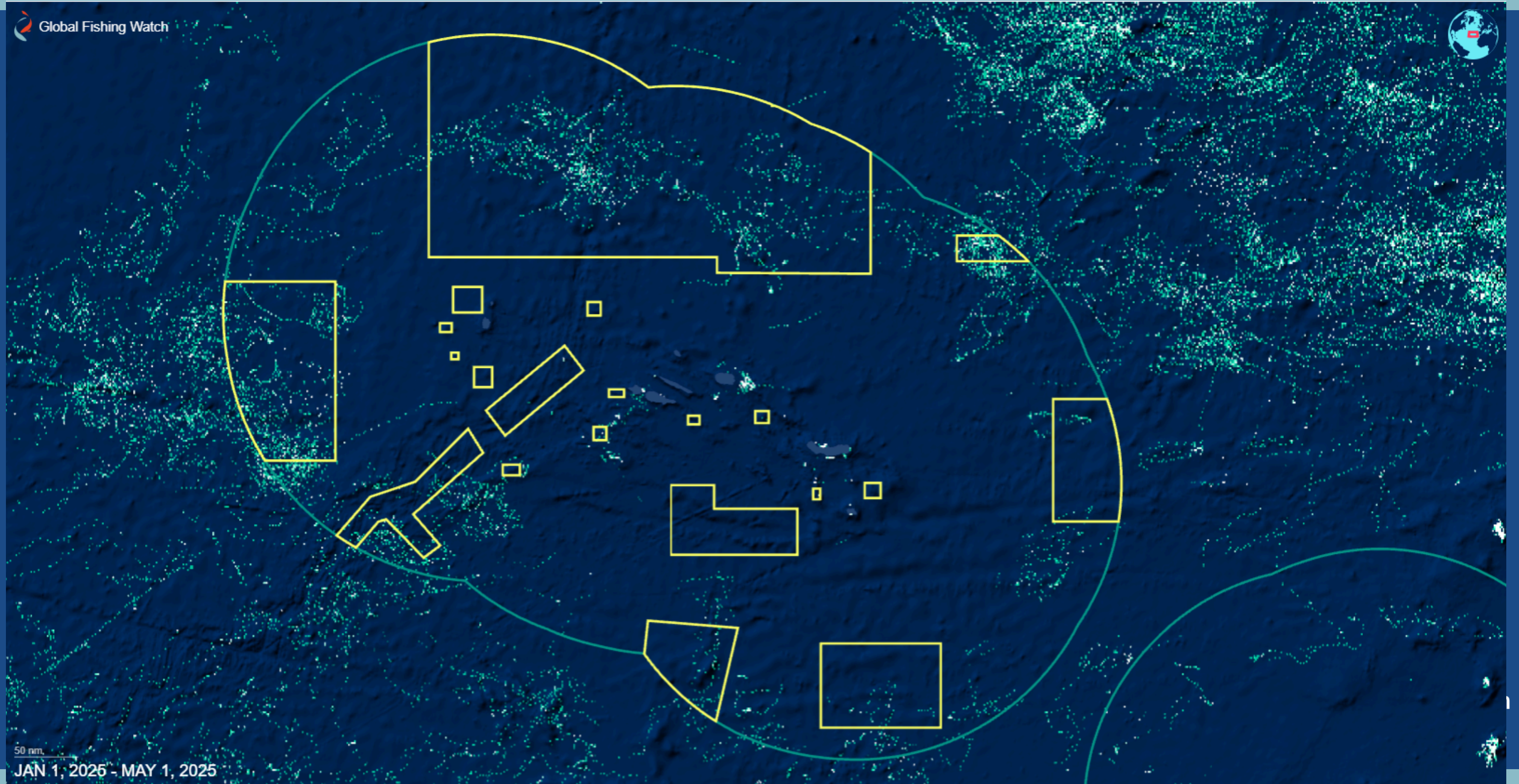
Global Fishing Watch data and technology within users own platforms and solutions.

VESSEL TYPE: <i>i</i>	
NAME GABU REEFER <small>4 values</small>	Carrier <small>3 values</small>
FLAG MDA <small>5 values</small>	MMSI 214 <small>2 values</small>
IMO 83 <small>2 values</small>	CALLSIGN E <small>3 values</small>
GEARTYPE: <i>i</i> <small>1 values</small> Since Feb 22, 2019	LENGTH 96.086 <small>6 values</small>
CROSS TONNAGE	DEPTH

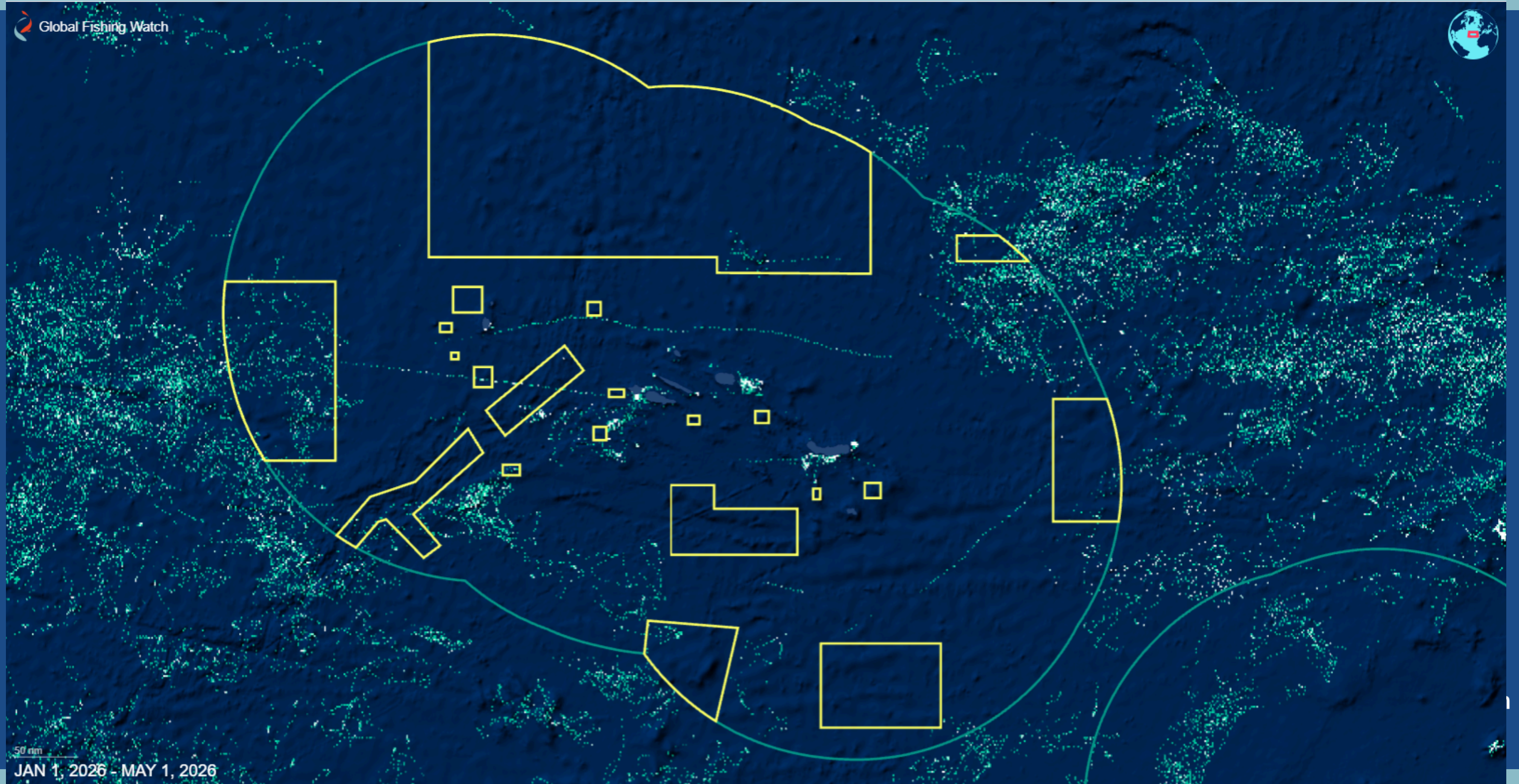
Vessel viewer

Vessel identity and history profiles. Pilot with TMT collaboration.

Azures Example - Pre Designation



Azores Example - Post Designation



Thank you

charles@globalfishingwatch.org

globalfishingwatch.org/marine-manager-portal/

