

# Powering 30x30 with Transparency and Technology

HAC virtual match-making fair  
28 May 2025



Global Fishing Watch

ACTIVITY

Apparent fishing effort

SOURCE

AIS

hours / 32,000 km²

0

2K

10K

50K

≥100K

Apparent fishing effort

SOURCE

VMS (10 countries)

hours / 32,000 km²

0

2K

10K

50K

≥100K

Vessel presence

DETECTIONS

Night light detections (VIIRS)

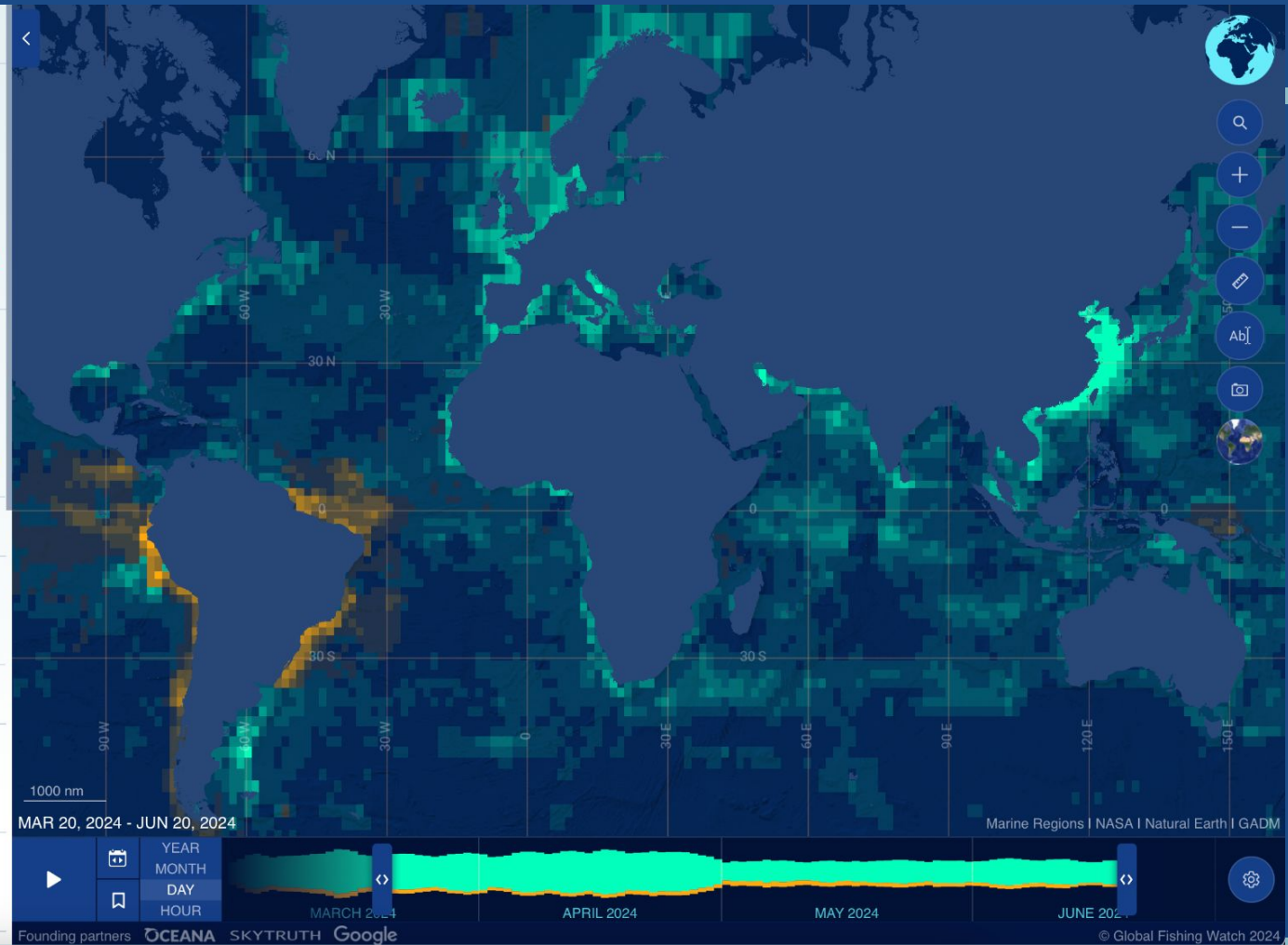
Radar vessel detections (SAR)

EVENTS

Encounter Events (AIS)

VESSLS

Search for vessels or add them from the map.





# Offer 1: Design & Designation of MPAs/OECMs

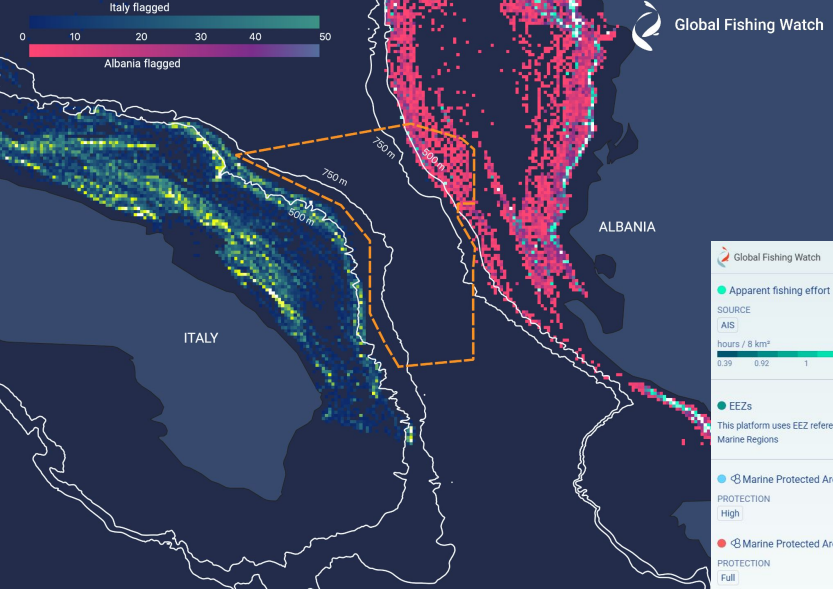
**Aim:** Support equitable and impactful designation of MPAs that align with 30x30.

- ***Insights:*** Estimate and visualize interactions between marine ecosystems and potential threats to biodiversity from extractive industries and other human uses.
- ***Open information:*** Democratizing data to promote inclusive and participatory implementation of 30x30.
- ***Collaboration:*** Complement existing MPA scenario-building tools by offering insights, data and visualizations to all stakeholders.

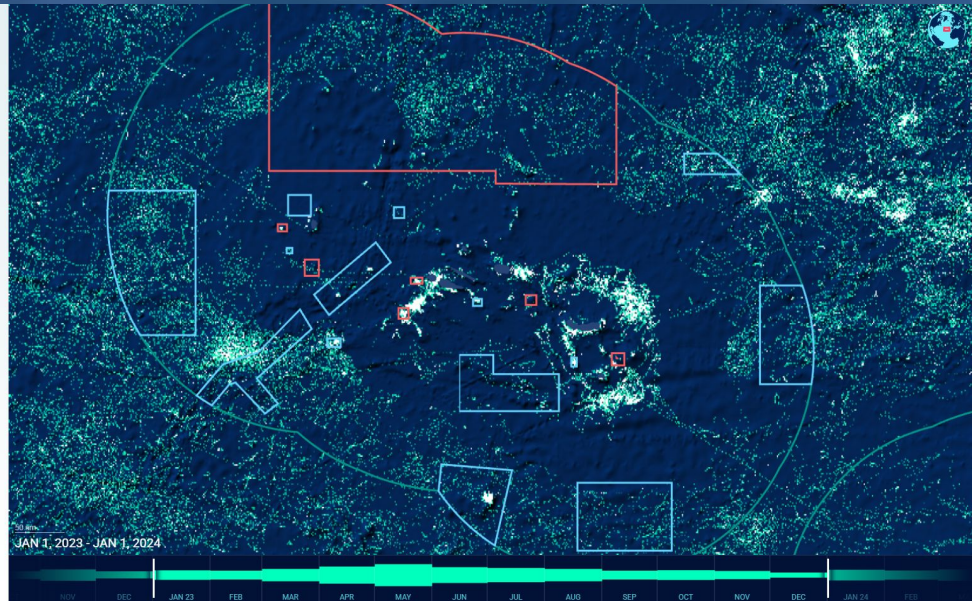


# Offer 1: Design & Designation of MPAs/OECMs

## Otranto Fisheries Restricted Area



Azores  
MPA  
network





## Offer 2: Management (plans) of MPAs & OECMs

Aim: Assess & inform the objectives of MPAs in terms of threat reduction, support effective management plans.

- *Identification of threats:* Our goal is to ensure that data regarding threats informs conservation measures aimed at reducing these threats.
- *Accountability:* Our data can be used to hold management plans to account for both conservation and communities.

We support inclusion in management plans of data that can be effectively monitored.



## Offer 3: Monitoring (plans) of MPAs/OECMs

**Aim:** Provide the tools to monitor & act on non-compliance of MPA rules, and track conservation outcomes to eliminate paper parks.

- *Analysis:* Provide situational and risk awareness to support design and delivery of monitoring and enforcement plans.
- *Patrol support:* Assist patrols by supplying data to relevant agencies for thorough risk based pre-patrol planning and targeted execution.
- *Capacity development:* Provide training to relevant agencies around value and application of open data, transparency principles, and the use of the GFW Marine Manager Portal for monitoring of activity inside MPAs and tracking conservation objectives.

*Each of our interventions can be carried out in collaboration or in support of other partners. Our interventions aim towards transparency of human use of the oceans and the use of technology for better understanding and governance of the oceans.*

**Thank you!**