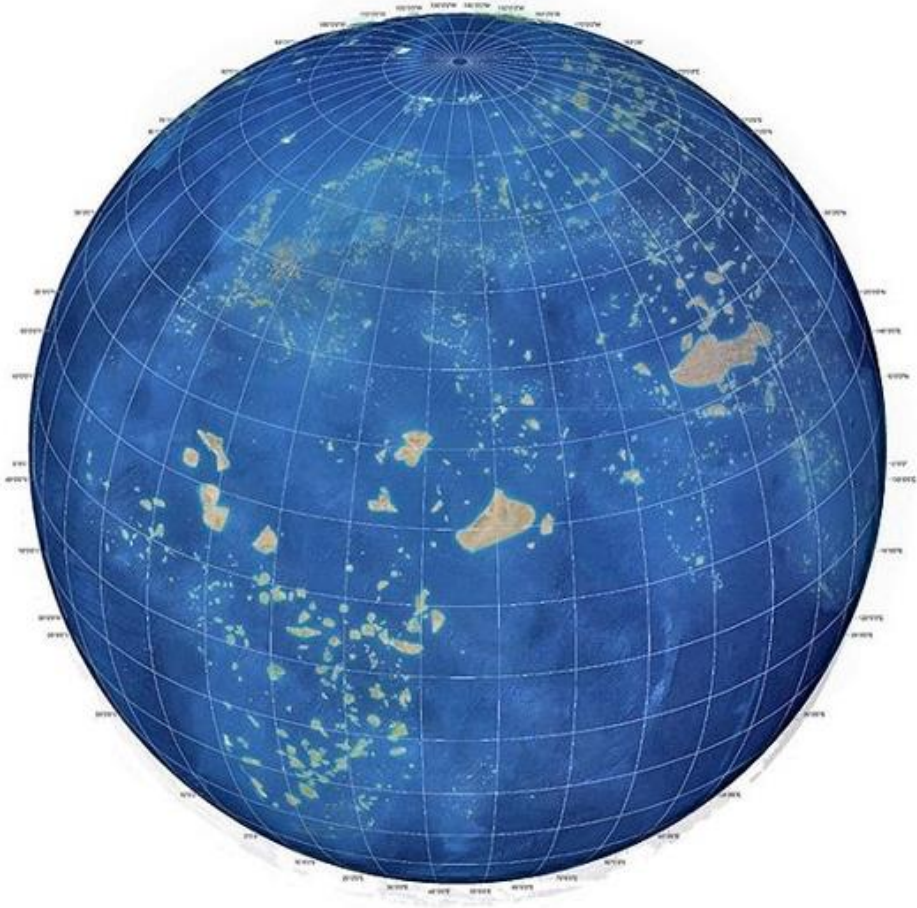


Ensure and enable that by 2030 at least 30 per cent of terrestrial, inland water, and of coastal and marine areas, especially areas of particular importance for biodiversity and ecosystem functions and services, are effectively **conserved and managed through ecologically representative, well-connected and equitably governed systems of protected areas and other effective area-based conservation measures**, recognizing indigenous and traditional territories where applicable, and integrated into wider landscapes, seascapes and the ocean, while ensuring that any sustainable use, where appropriate in such areas, is fully consistent with conservation outcomes, recognizing and respecting the rights of indigenous peoples and local communities, including over their traditional territories.



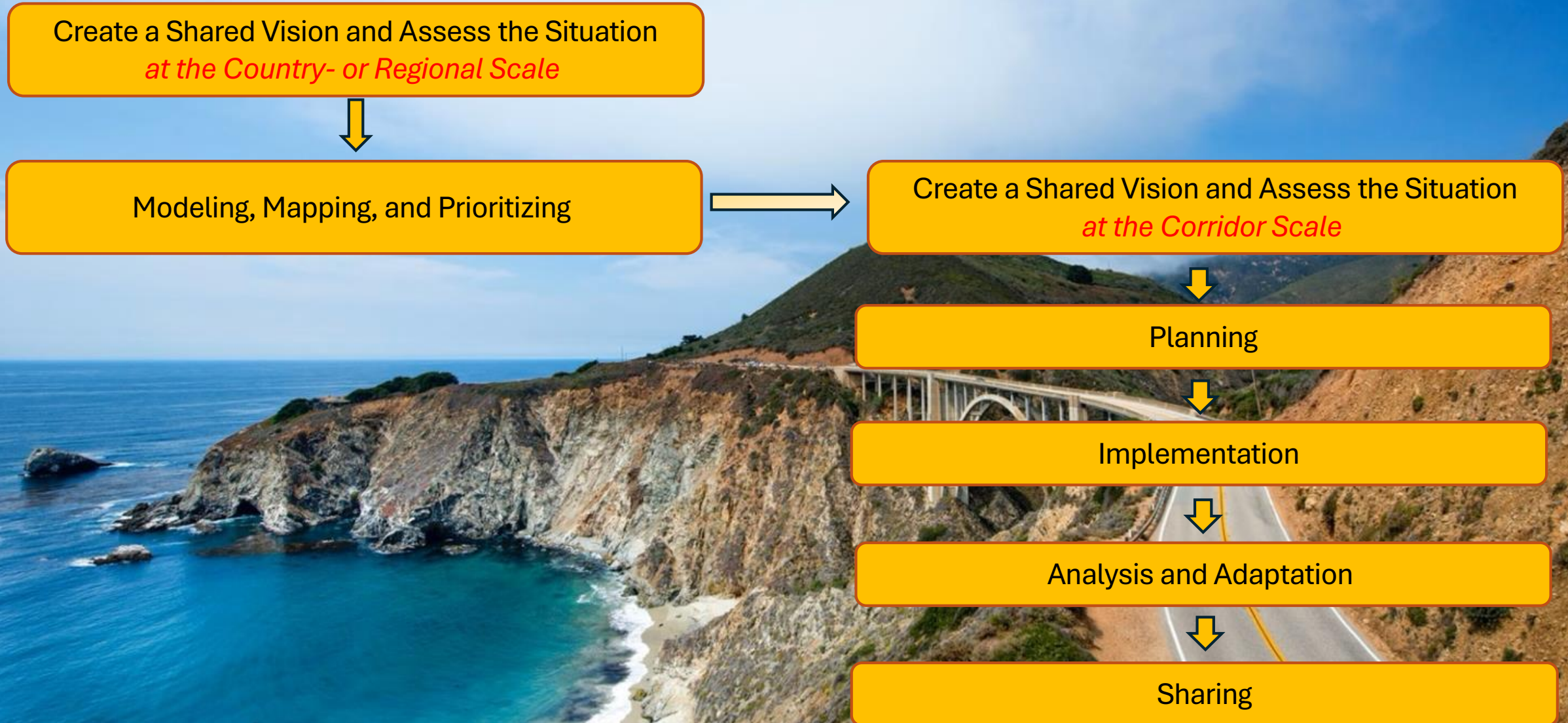
30x30 *without* ecological connectivity:
Protected areas & OECMs as isolated islands



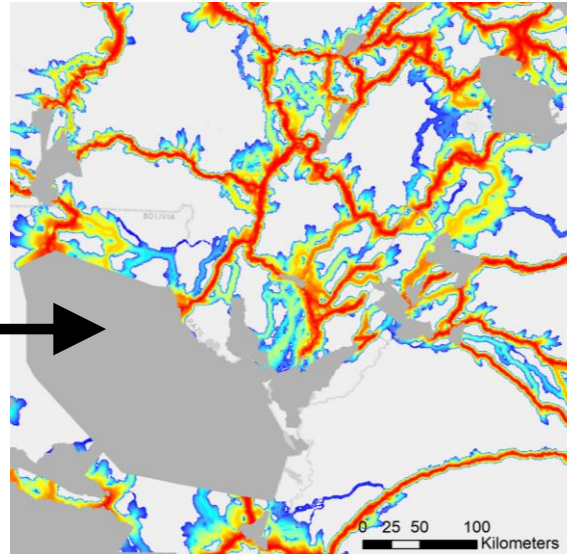
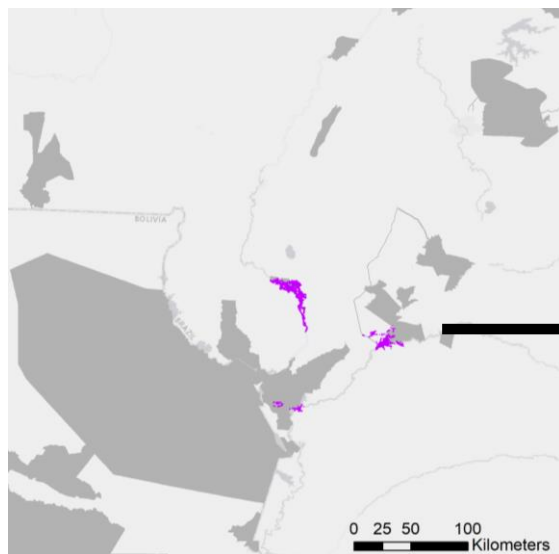
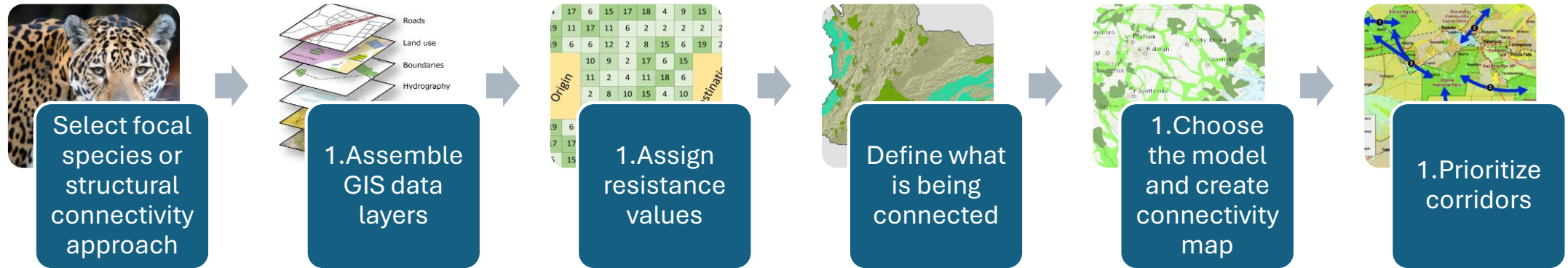
30x30 *with* ecological connectivity:
Biodiversity conservation & climate change resilience

Roadmap to Connected Landscapes and Seascapes

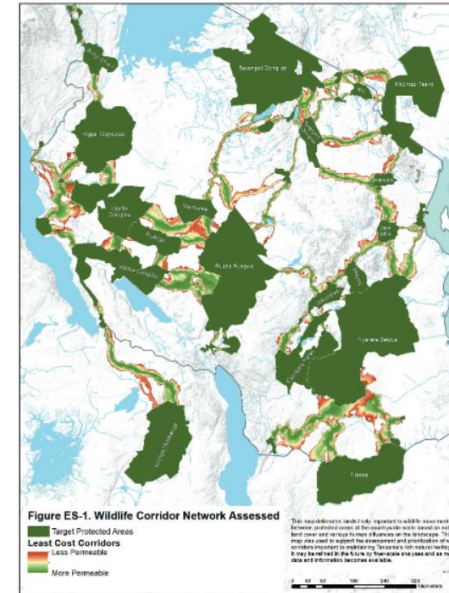
Based on the Open Standards for Conservation



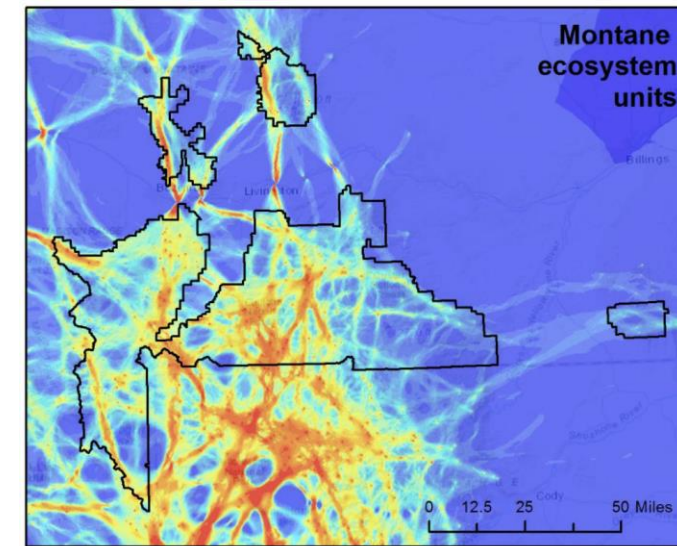
Connectivity Planning: Modeling and Mapping



Regional / Transboundary:
Jaguar connectivity modeling in the Pantanal-Chaco of South America



National:
Tanzania Wildlife Corridor Assessment, Prioritization, & Action Plan



Subnational:
Greater Yellowstone Ecosystem

Stakeholder Engagement for Connectivity Conservation



Romania, 2019



Quebec, 2023

Uzbekistan, 2024



Tanzania, 2024



The background of the slide is a photograph of a natural landscape. In the foreground, a stream flows over dark, jagged rocks, creating white water rapids. The banks are covered with dry, yellowish-brown grass and some green moss. In the background, rolling hills with similar vegetation stretch towards the horizon under a cloudy sky. The text is overlaid on this image.

CENTER *for* **LARGE LANDSCAPE CONSERVATION**

www.largelandscapes.org